

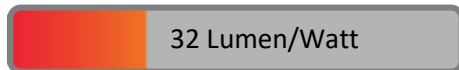
# PHOTOMETRIC TEST REPORT

---

CATENA LED

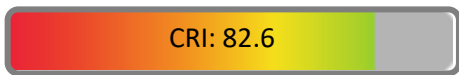
astro

## LIGHT EFFICIENCY:



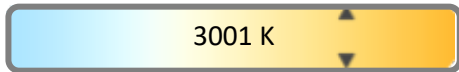
OUTPUT: 281 lm

## LIGHT QUALITY:



PEAK: 104 cd

## COLOR TEMPERATURE:



POWER: 8.9 W

PF: 0.51

Tracking number: [n/a](#)

Product name:

Catena LED

Item number:

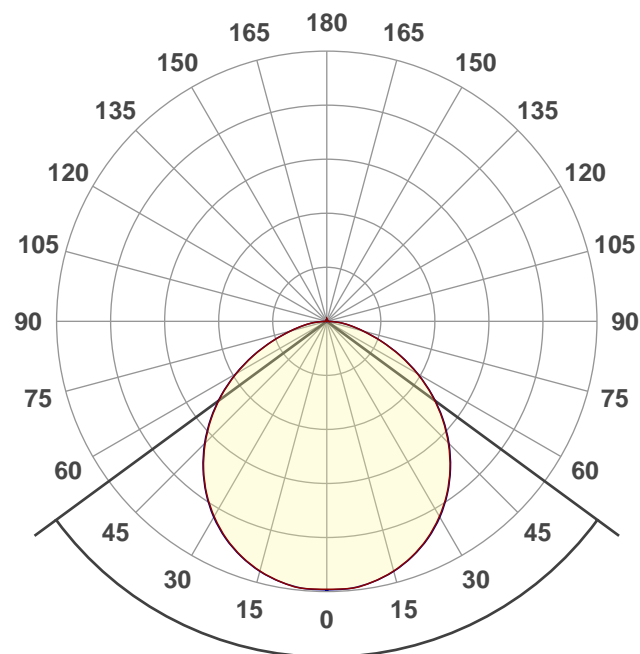
1137004

Date and time:

23/02/2021 12:52:29

Description:

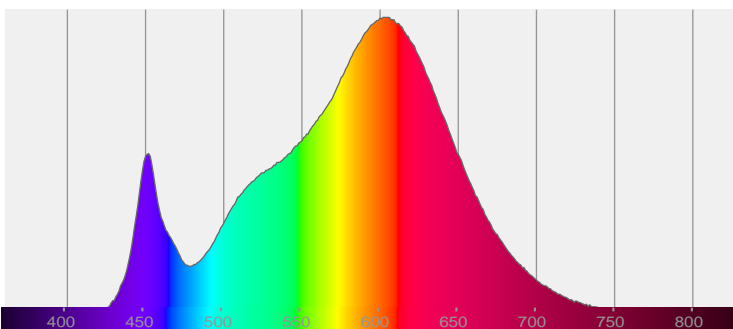
Damp Rated Illuminated LED Bathroom Mirror



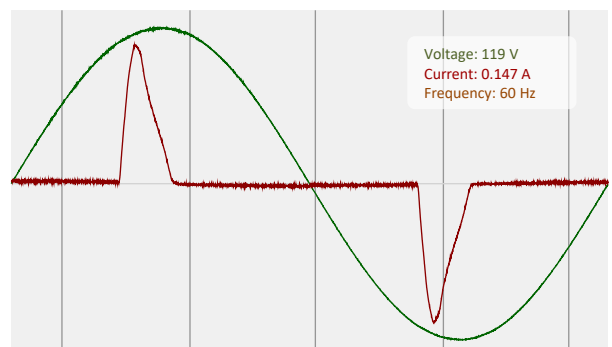
107.5°

CIE 1931  
x: 0.437  
y: 0.405

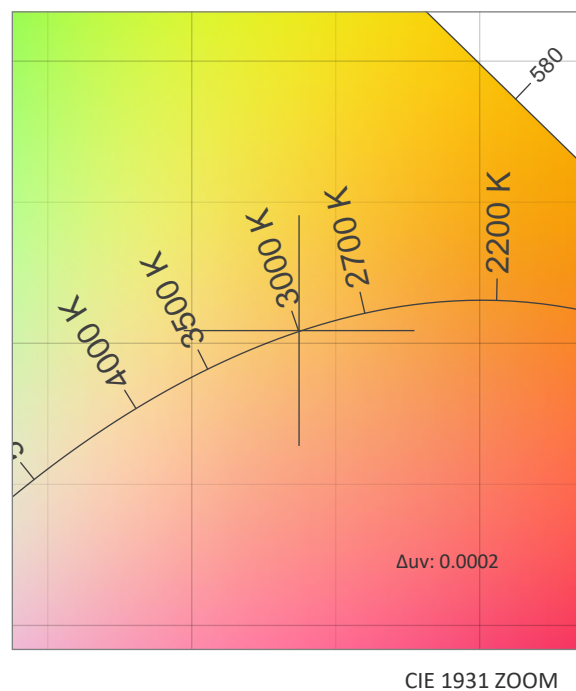
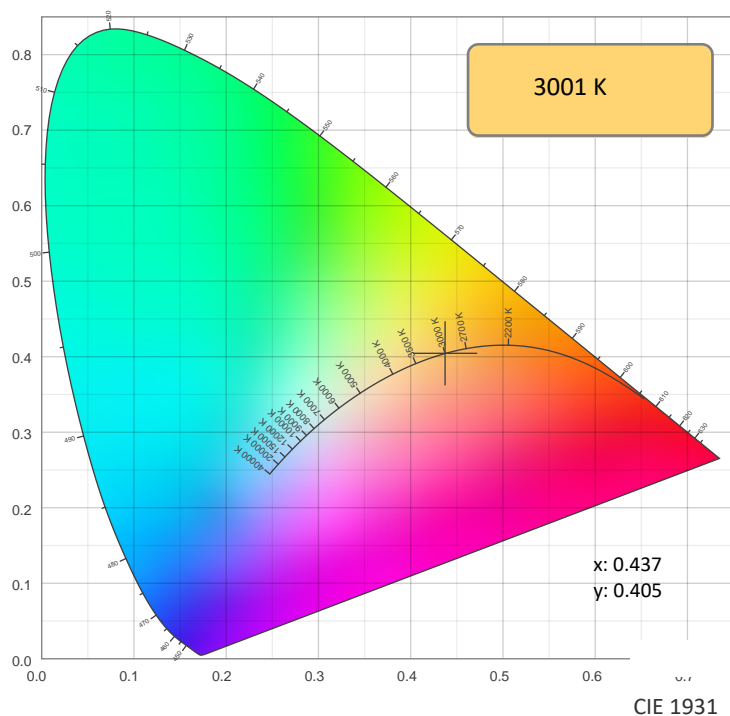
## SPECTRA



## POWER

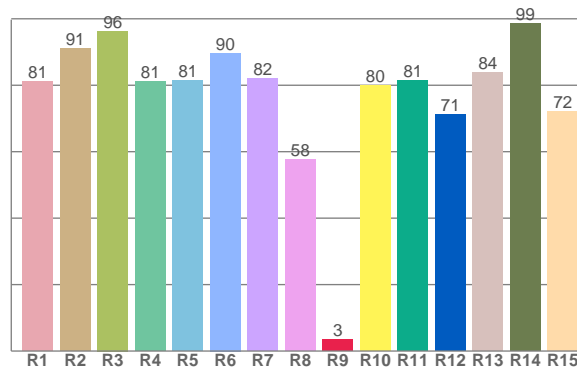
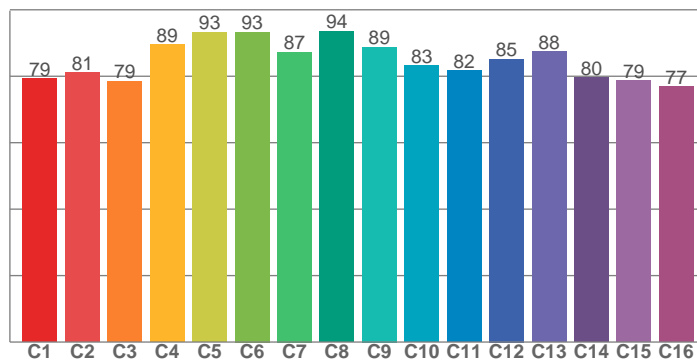


## COLOR DETAILS



TM30: 84.8

CRI: 82.6 (R1-R8)



CRI R values, only R1-R8 are used to calculate final CRI value

R1	R2	R3	R4	R5	R6	R7	R8	R9	R10	R11	R12	R13	R14	R15
81.2	91.2	96.3	81.2	81.4	89.7	82.1	57.6	3.5	80.0	81.3	71.3	83.7	98.7	72.2

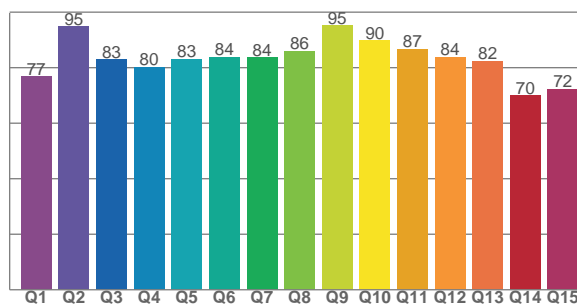
TM30 C values, 16 binned values out of total of 99 C values

C1	C2	C3	C4	C5	C6	C7	C8	C9	C10	C11	C12	C13	C14	C15	C16
79.3	81.1	78.5	89.4	93.3	93.3	87.3	93.6	88.8	83.3	81.7	85.2	87.5	79.5	78.7	77.0

CQS Q values

Q1	Q2	Q3	Q4	Q5	Q6	Q7	Q8	Q9	Q10	Q11	Q12	Q13	Q14	Q15
76.8	94.9	82.9	80.2	83.1	83.8	83.6	86.1	95.2	89.8	86.6	83.8	82.3	70.0	72.2

CQS: 82.0



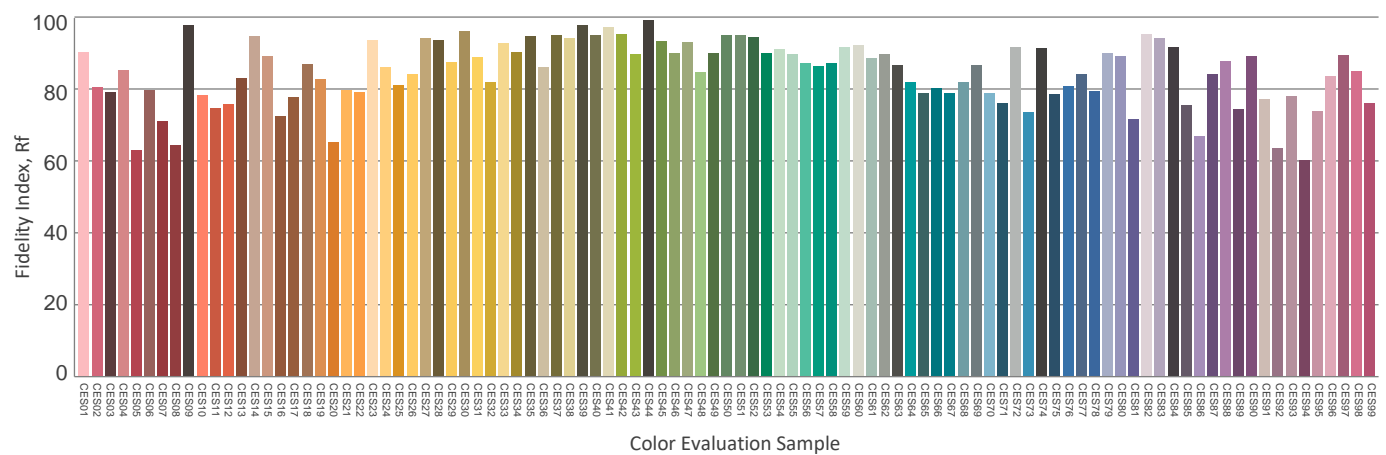
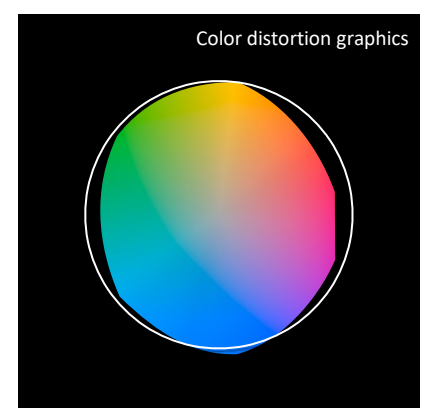
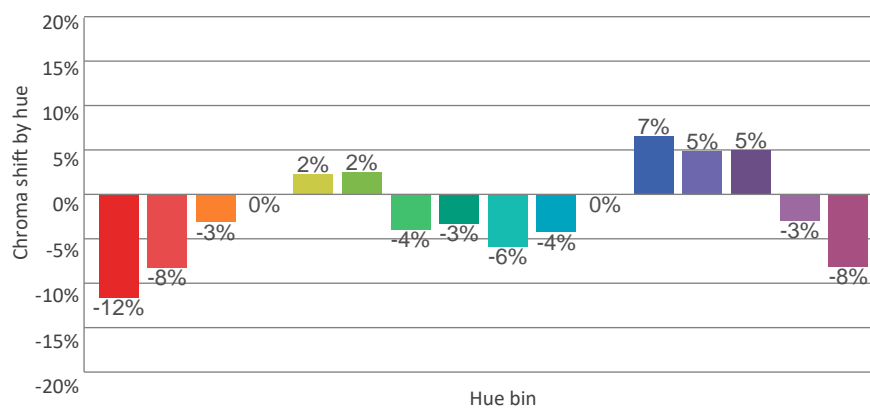
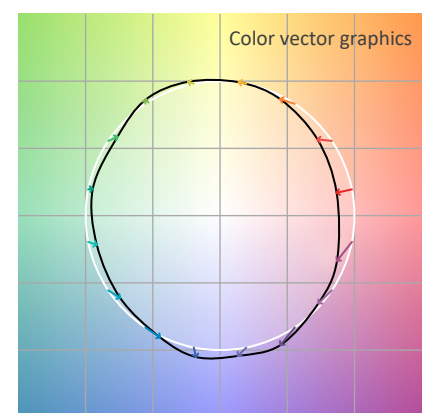
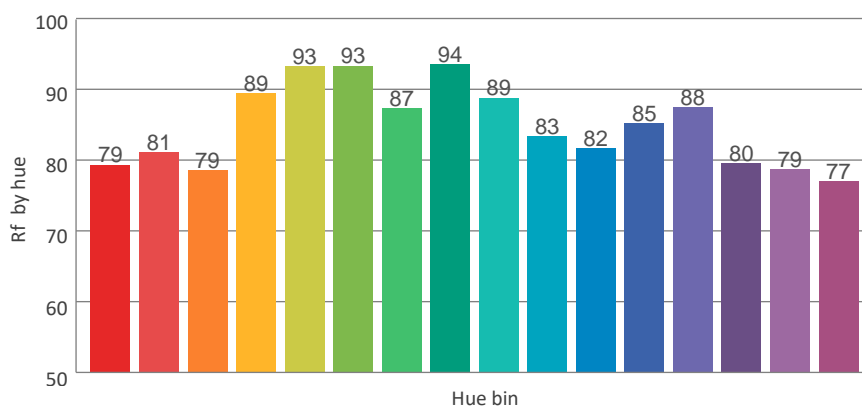
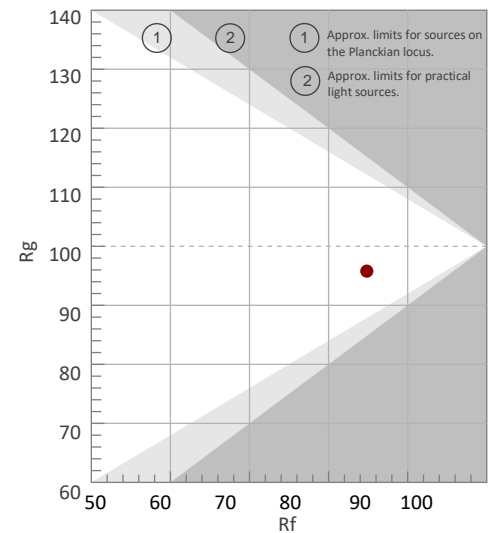
## COLOR PARAMETERS

Color temperature	Color rendering index	Red component	Color fidelity	Color gamut	Color quality scale	Color coordinate cie 1931	Color coordinate cie 1931	Color coordinate	Color coordinate	Color deviation from black body
CCT	CRI	CRI R9	TM30 Rf	TM30 Rg	CQS	x	y	u	v	Δuv
3001 K	82.6	3.5	84.8	95.8	82.0	0.437	0.405	0.251	0.348	0.0002

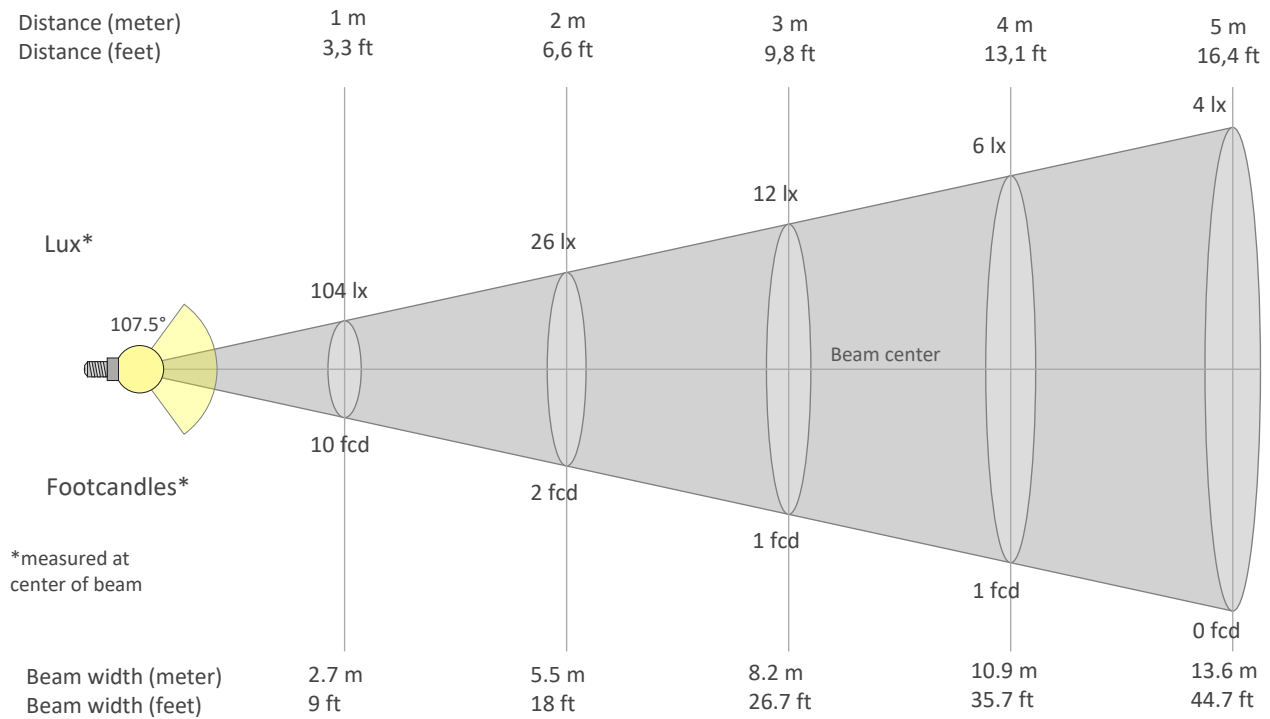
**Rf 84.8**  
Fidelity index Rf

**Rg 95.8**  
Gammut index Rg

Hue Bin	Graphic shifts (%)		
	R <sub>f</sub>	Chroma	Hue
1	79	-12%	0%
2	81	-8%	7%
3	79	-3%	11%
4	89	0%	6%
5	93	2%	4%
6	93	2%	-2%
7	87	-4%	-6%
8	94	-3%	-1%
9	89	-6%	3%
10	83	-4%	10%
11	82	0%	13%
12	85	7%	3%
13	88	5%	-7%
14	80	5%	-16%
15	79	-3%	-14%
16	77	-8%	-16%



## BEAM DETAILS



## Beam intensities from 1-20m

1m	2m	3m	4m	5m	6m	7m	8m	9m	10m	11m	12m	13m	14m	15m	16m	17m	18m	19m	20m
3.3ft	6.6ft	9.8ft	13.1ft	16.4ft	19.7ft	23ft	26.2ft	29.5ft	32.8ft	36.1ft	39.4ft	42.7ft	45.9ft	49.2ft	52.5ft	55.8ft	59.1ft	62.3ft	65.6ft
104lx	26lx	12lx	6lx	4lx	3lx	2lx	2lx	1lx	1lx	1lx	1lx	1lx	1lx	0lx	0lx	0lx	0lx	0lx	0lx
9.6fcd	2.4fcd	1.1fcd	0.6fcd	0.4fcd	0.3fcd	0.2fcd	0.2fcd	0.1fcd	0.1fcd	0.1fcd	0.1fcd	0.1fcd	0fcd	0fcd	0fcd	0fcd	0fcd	0fcd	0fcd

## Intensities in 0° c-plane

0°	5°	10°	15°	20°	25°	30°	35°	40°	45°	50°	55°	60°	65°	70°	75°	80°	85°	90°	95°
104	104	102	100	97	92	87	81	74	66	58	50	40	31	22	15	9	5	0	0
100%	100%	98%	96%	93%	89%	84%	78%	71%	64%	56%	48%	39%	30%	22%	14%	9%	4%	0%	0%

## Intensities in 90° c-plane

0°	5°	10°	15°	20°	25°	30°	35°	40°	45°	50°	55°	60°	65°	70°	75°	80°	85°	90°	95°
104	104	102	100	97	93	87	81	74	67	59	50	41	31	22	15	9	4	0	0
100%	100%	99%	96%	93%	89%	84%	78%	72%	64%	56%	48%	39%	30%	22%	14%	9%	4%	0%	0%

## Intensities in 180° c-plane

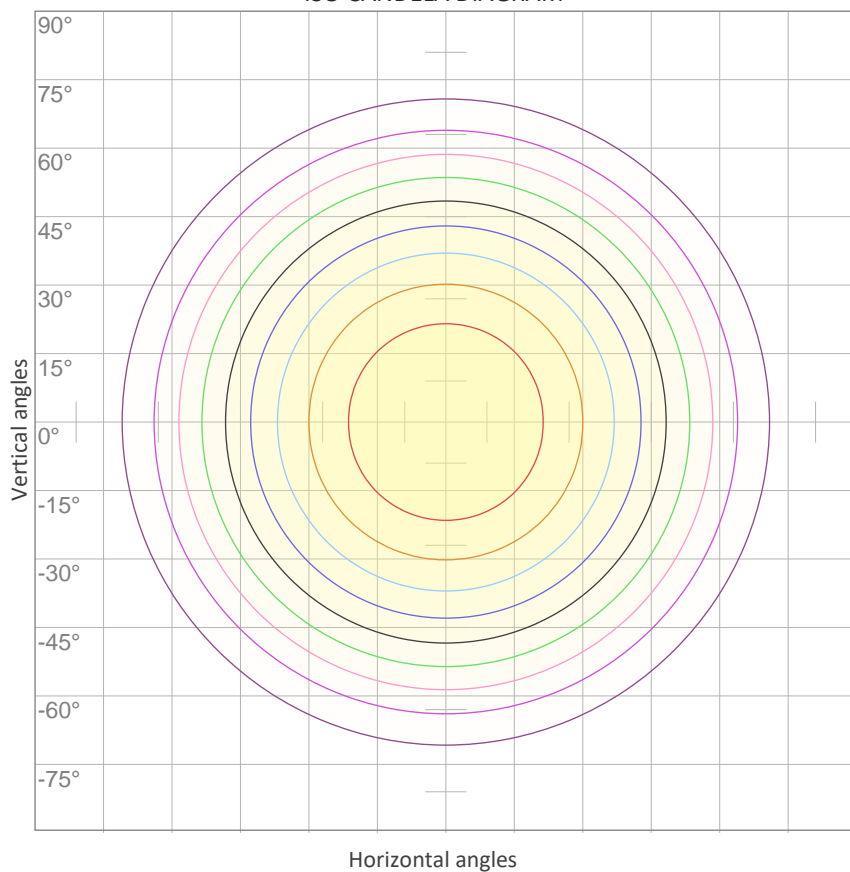
0°	5°	10°	15°	20°	25°	30°	35°	40°	45°	50°	55°	60°	65°	70°	75°	80°	85°	90°	95°
104	104	102	100	97	92	87	81	74	66	58	50	40	31	22	15	9	5	0	0
100%	100%	98%	96%	93%	89%	84%	78%	71%	64%	56%	48%	39%	30%	22%	14%	9%	4%	0%	0%

## Intensities in 270° c-plane

0°	5°	10°	15°	20°	25°	30°	35°	40°	45°	50°	55°	60°	65°	70°	75°	80°	85°	90°	95°
104	104	102	100	97	93	87	81	74	67	59	50	41	31	22	15	9	4	0	0
100%	100%	99%	96%	93%	89%	84%	78%	72%	64%	56%	48%	39%	30%	22%	14%	9%	4%	0%	0%

Beam angle 50%	Field angle 10%	Cutoff angle 2,5%	Intensity ratio in 120° cone	Intensity ratio in 90° cone
107.5°	157.4°	174.1°	80.8%	56.0%

ISO CANDELA DIAGRAM



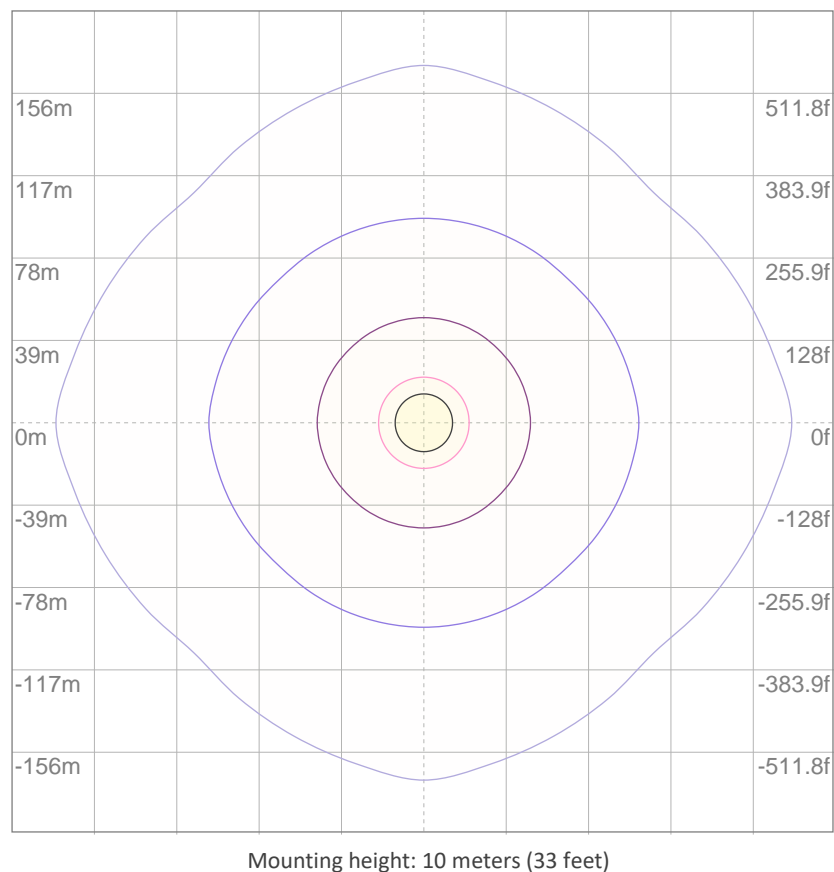
10%	10 cd
20%	21 cd
30%	31 cd
40%	42 cd
50%	52 cd
60%	62 cd
70%	73 cd
80%	83 cd
90%	93 cd

Conditions:

Number of c-planes: 8

Candela at center: 104 cd

ISO LUX DIAGRAM



3%	31.1m lx
5%	51.9m lx
10%	0.104 lx
30%	0.311 lx
50%	{LUX_10M50} lx

Conditions:

Number of c-planes: 8

Lux at center: 1.04 lx

Lux distribution on a surface when lamp is mounted at 10 meters from the surface.

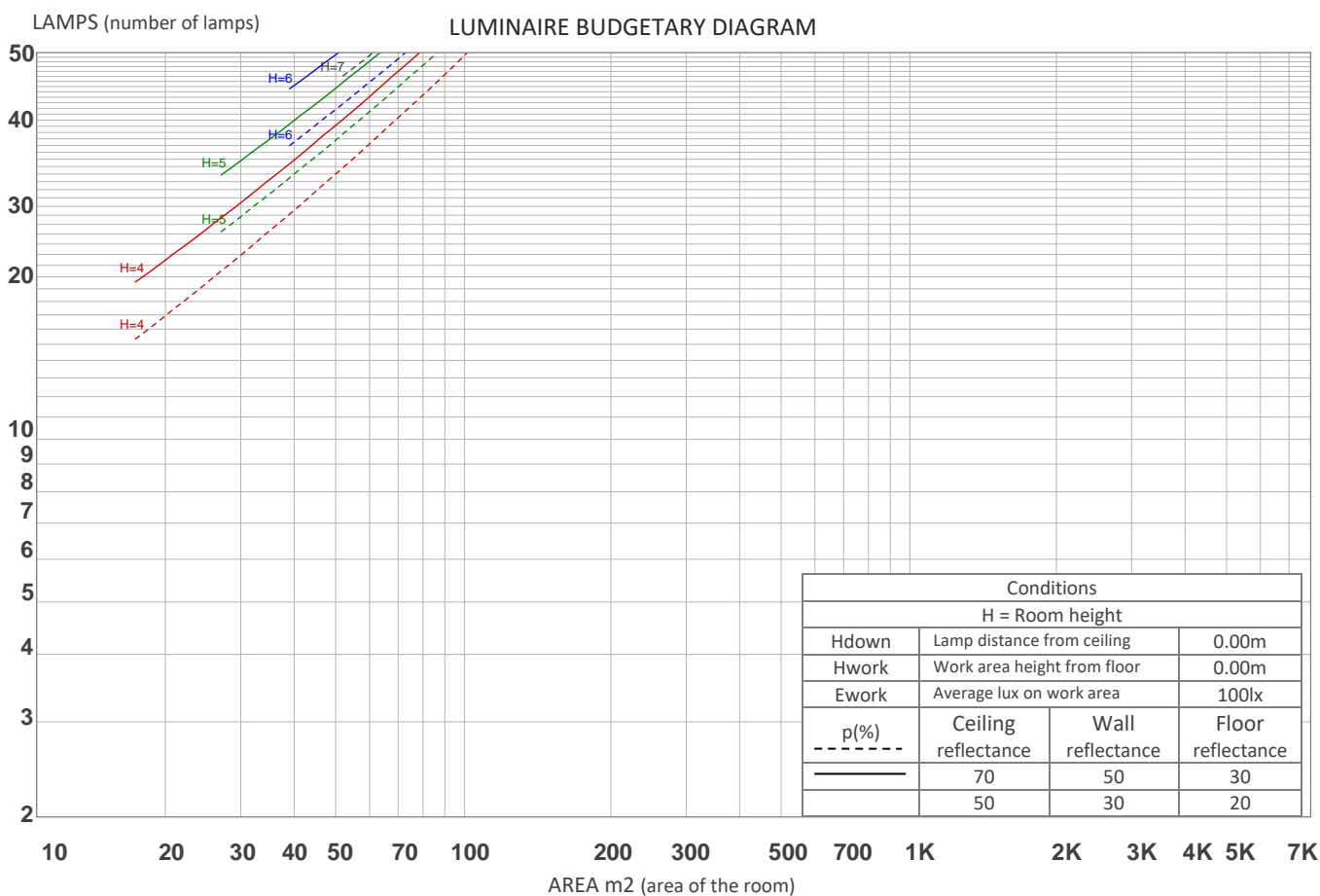
## UGR

## GLARE EVALUATION ACCORDING TO UGR

p Ceiling		70	70	50	50	30	70	70	50	50	30
p Walls		50	30	50	30	30	50	30	50	30	30
p Floor		20	20	20	20	20	20	20	20	20	20
Room size X    Y		Viewing direction at right angles to lamp axis					Viewing direction parallel to lamp axis				
2H	2H	15.8	16.9	16.0	17.3	17.5	15.8	17.0	16.0	17.3	17.5
	3H	16.3	17.6	16.8	17.9	18.1	16.4	17.6	16.8	17.9	18.1
	4H	16.5	17.7	17.0	18.0	18.3	16.5	17.7	17.0	18.0	18.3
	6H	16.7	17.7	17.0	18.0	18.4	16.7	17.7	17.0	18.0	18.4
	8H	16.7	17.7	17.0	18.0	18.4	16.7	17.7	17.0	18.0	18.4
	12H	16.6	17.6	17.0	18.0	18.4	16.7	17.6	17.0	18.0	18.4
4H	2H	16.0	17.2	16.5	17.5	17.8	16.1	17.2	16.5	17.5	17.8
	3H	16.9	17.9	17.3	18.2	18.7	16.9	17.9	17.3	18.2	18.7
	4H	17.1	18.0	17.5	18.4	18.9	17.1	18.0	17.5	18.4	19.0
	6H	17.2	18.1	17.7	18.4	18.8	17.2	18.1	17.7	18.4	18.8
	8H	17.2	18.0	17.8	18.4	18.8	17.2	18.0	17.8	18.4	18.8
	12H	17.2	17.9	17.7	18.3	18.8	17.2	17.9	17.7	18.3	18.8
8H	4H	17.1	17.9	17.7	18.3	18.7	17.1	17.9	17.7	18.3	18.7
	6H	17.4	17.9	17.9	18.4	19.0	17.4	17.9	17.9	18.4	19.0
	8H	17.4	17.9	18.0	18.5	19.1	17.4	17.9	18.0	18.5	19.1
	12H	17.5	17.9	18.1	18.4	19.0	17.5	17.9	18.1	18.4	19.0
12H	4H	17.1	17.7	17.6	18.2	18.7	17.1	17.8	17.6	18.2	18.7
	6H	17.4	17.9	17.9	18.4	19.1	17.4	17.9	17.9	18.4	19.1
	8H	17.4	17.9	18.0	18.4	19.0	17.4	17.9	18.0	18.4	19.0
Variation of the observer position for the luminaire distance S											
S = 1.0H		0.2 / -0.4					0.2 / -0.4				
S = 1.5H		0.5 / -1.0					0.5 / -1.0				
S = 2.0H		1.3 / -1.9					1.3 / -1.9				
Standard table		n/a					n/a				
Correction summand		n/a					n/a				
Corrected glare indices referring to 281 lm total luminous flux											

## COEFFICIENTS OF UTILIZATION

Ceiling reflectance	80				70				50			30			10			0
Wall reflectance	70	50	30	10	70	50	30	10	50	30	10	50	30	10	50	30	10	0
Floor reflectance	20	20	20	20	20	20	20	20	20	20	20	20	20	20	20	20	20	0
RCR	(RCR: Room Cavity Ratio) Room Values are expressed as percentage of Lumens delivered to the task surface																	
0	119	119	119	119	116	116	116	116	111	111	111	106	106	106	101	101	101	99
1	109	104	100	96	106	102	98	95	98	95	92	94	91	89	90	88	86	84
2	99	91	85	79	97	89	83	78	86	81	76	82	78	74	79	76	73	70
3	91	80	73	66	88	79	71	66	76	69	64	73	68	63	70	66	62	60
4	83	71	63	56	81	70	62	56	68	61	55	65	59	54	63	58	53	51
5	77	64	55	49	74	63	55	48	61	53	48	59	52	47	57	51	47	44
6	71	58	49	43	69	57	48	42	55	47	42	53	46	41	51	46	41	39
7	66	52	44	38	64	51	43	37	50	43	37	48	42	37	47	41	36	35
8	61	48	39	34	60	47	39	33	46	38	33	44	38	33	43	37	33	31
9	57	44	36	30	56	43	35	30	42	35	30	41	34	30	40	34	30	28
10	54	41	33	27	52	40	32	27	39	32	27	38	32	27	37	31	27	25



## ZONAL LUMEN SUMMARY

0°-10°	10°-20°	20°-30°	30°-40°	40°-50°	50°-60°	60°-70°	70°-80°	80°-90°
9.85 lm	28.2 lm	42.6 lm	50.7 lm	51.4 lm	44.4 lm	31.0 lm	15.8 lm	4.85 lm
90°-100°	100°-110°	110°-120°	120°-130°	130°-140°	140°-150°	150°-160°	160°-170°	170°-180°
0.243 lm	0.272 lm	0.324 lm	0.341 lm	0.346 lm	0.315 lm	0.257 lm	0.168 lm	0.060 lm

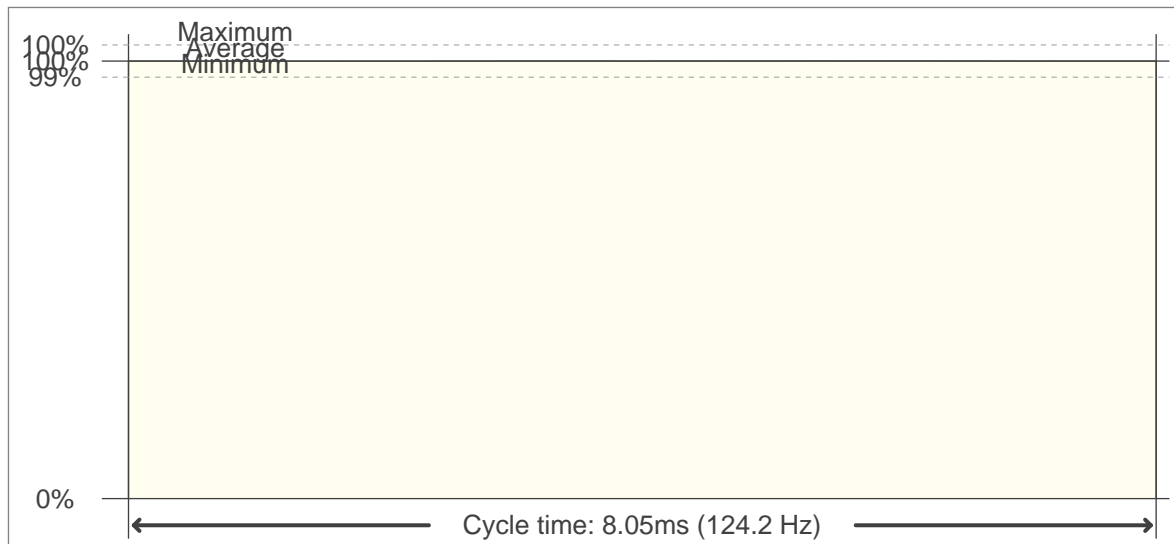


## FLICKER

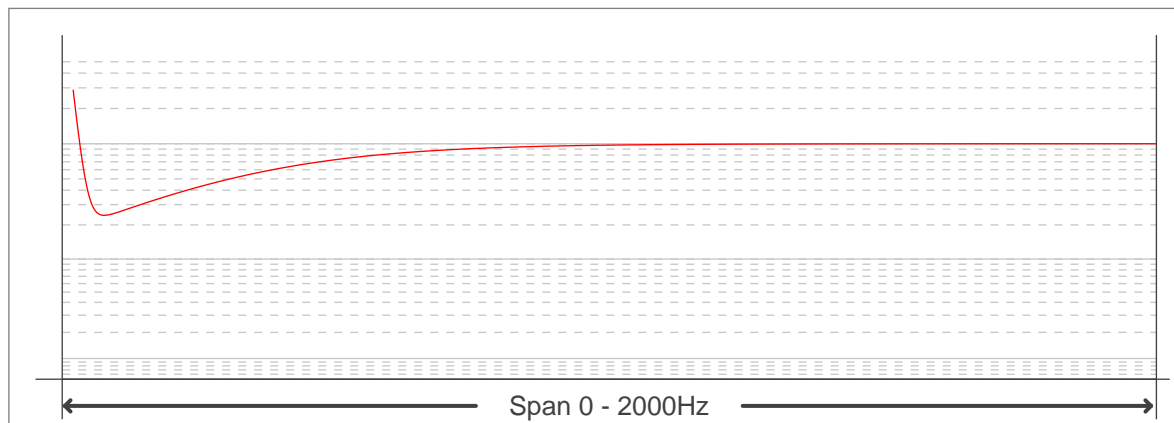
## FLICKER CURVE (COMPLETE SAMPLED FLICKER)



## FLICKER FRAME (FRAME OF ONE FLICKER PERIOD)



## FLICKER FFT (FREQUENCY SCOPE OF FLICKER CURVE)



## FLICKER RESULTS:

Flicker frequency:	124.22 Hz
Flicker index:	0
Flicker percentage:	0.06 %
SVM: (Visual flicker)	0

## FLICKER CONDITIONS:

Sample rate:	20000 samples/second
--------------	----------------------