

PHOTOMETRIC TEST REPORT

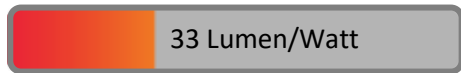
TOSCA LED POLISHED CHROME UL

astro

TOSCA LED POLISHED CHROME UL

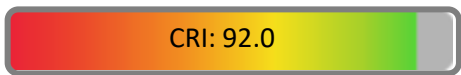
astro

LIGHT EFFICIENCY:



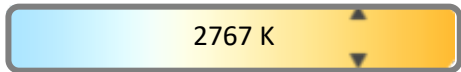
OUTPUT: 81.1 lm

LIGHT QUALITY:



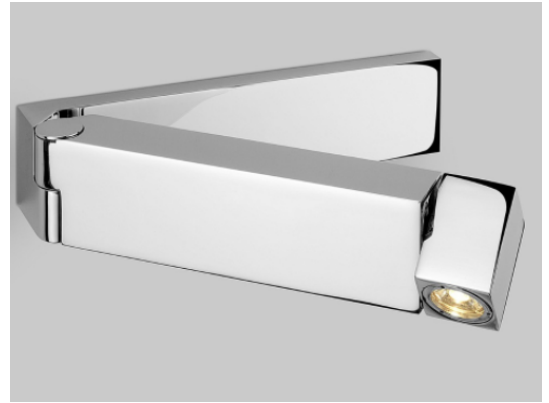
PEAK: 429 cd

COLOR TEMPERATURE:



POWER: 2.5 W

PF: 0.51



Tracking number: [n/a](#)

Product name:

Tosca LED Polished Chrome UL

Item number:

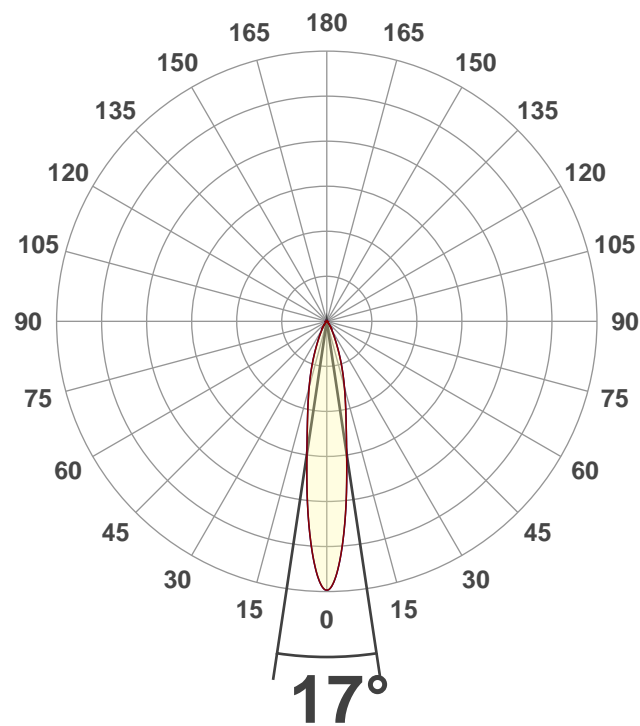
1157004

Date and time:

12/10/2020 12:49:37

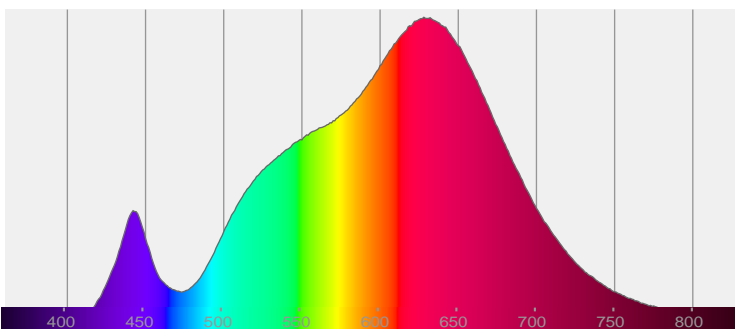
Description:

Dry Rated LED Reading Light

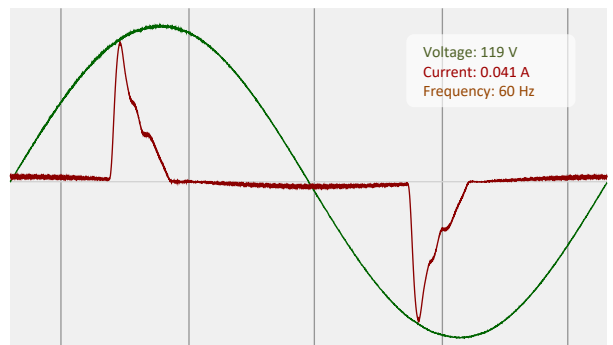


CIE 1931
x: 0.457
y: 0.414

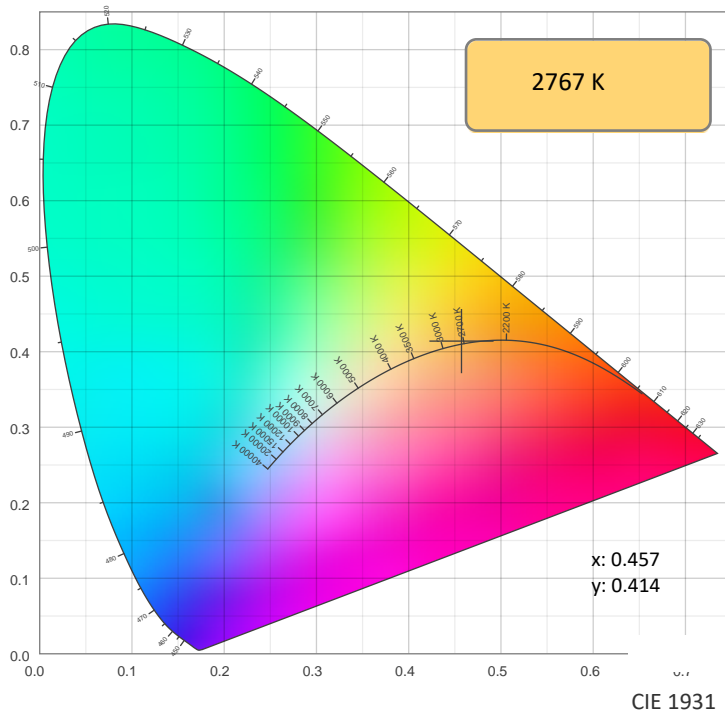
SPECTRA



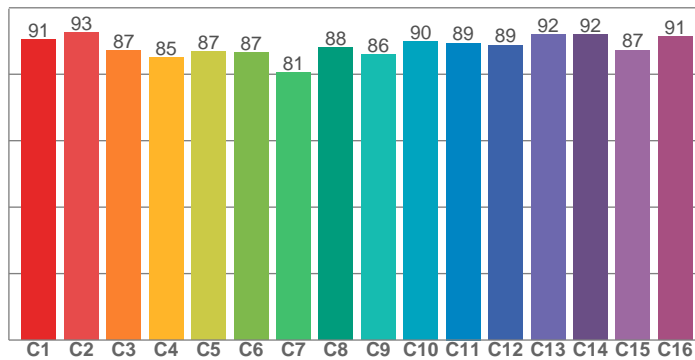
POWER



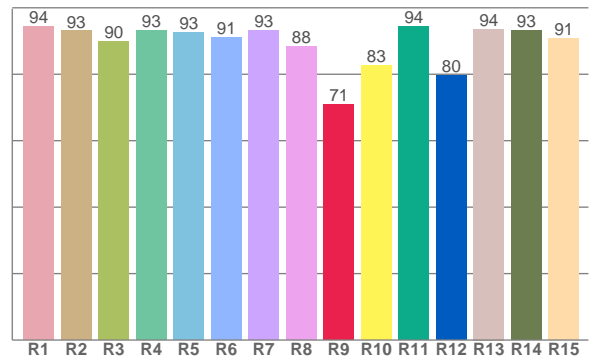
COLOR DETAILS



TM30: 88.6



CRI: 92.0 (R1-R8)



CRI R values, only R1-R8 are used to calculate final CRI value

R1	R2	R3	R4	R5	R6	R7	R8	R9	R10	R11	R12	R13	R14	R15
94.3	93.0	90.0	93.2	92.6	91.1	93.2	88.5	71.0	82.6	94.4	79.5	93.6	93.3	90.8

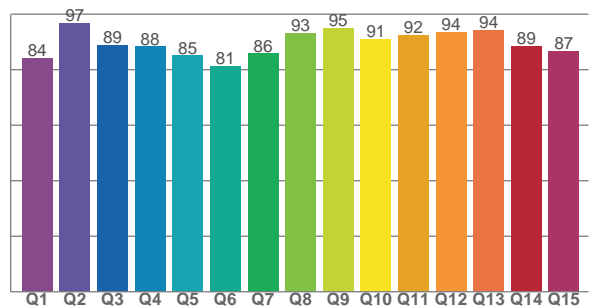
TM30 C values, 16 binned values out of total of 99 C values

C1	C2	C3	C4	C5	C6	C7	C8	C9	C10	C11	C12	C13	C14	C15	C16
90.5	92.6	87.1	85.0	86.8	86.6	80.5	88.1	86.0	89.8	89.4	88.8	92.0	91.9	87.3	91.4

CQS Q values

Q1	Q2	Q3	Q4	Q5	Q6	Q7	Q8	Q9	Q10	Q11	Q12	Q13	Q14	Q15
84.1	96.7	88.8	88.4	85.1	81.3	85.8	93.1	95.0	91.1	92.5	93.5	94.2	88.6	86.6

CQS: 88.6



COLOR PARAMETERS

Color temperature	Color rendering index	Red component	Color fidelity	Color gamut	Color quality scale	Color coordinate cie 1931	Color coordinate cie 1931	Color coordinate	Color coordinate	Color deviation from black body
CCT	CRI	CRI R9	TM30 Rf	TM30 Rg	CQS	x	y	u	v	Δuv
2767 K	92.0	71.0	88.6	103.8	88.6	0.457	0.414	0.259	0.352	0.0015

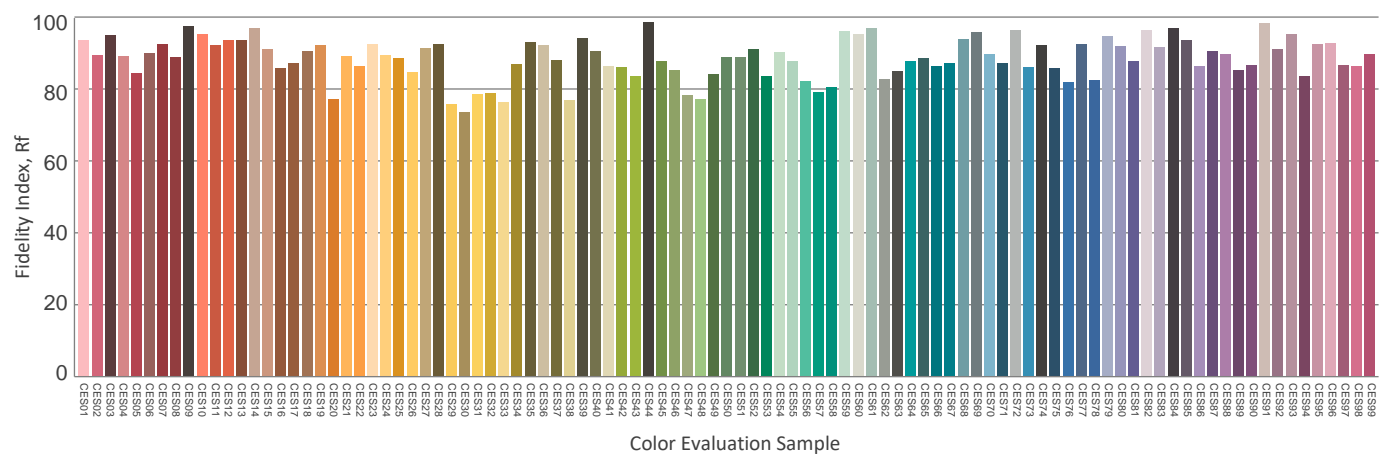
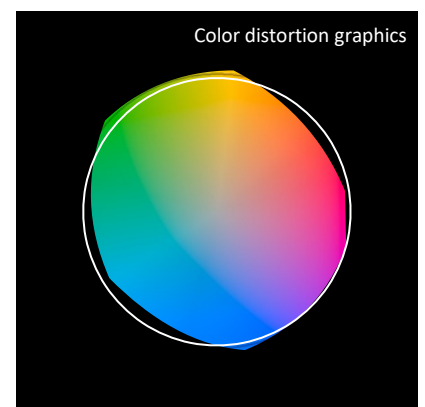
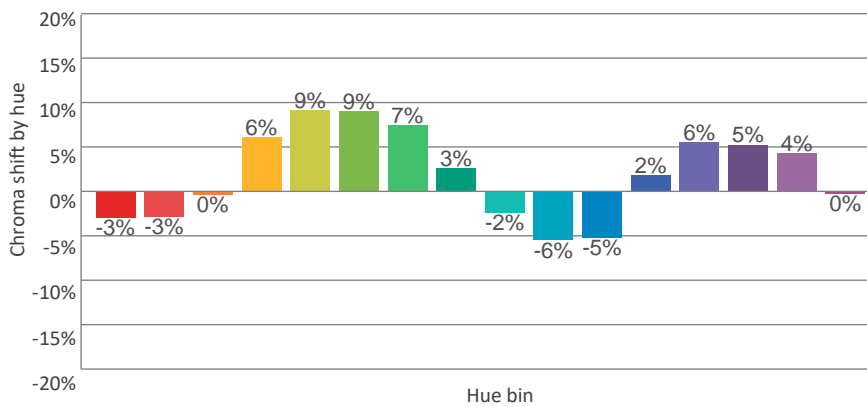
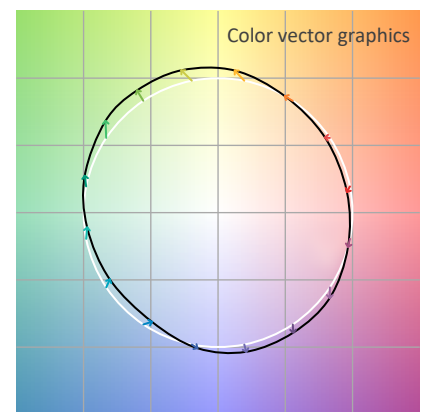
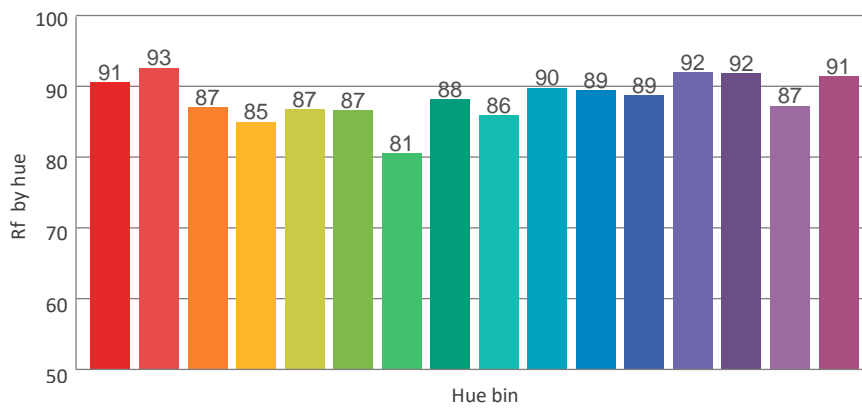
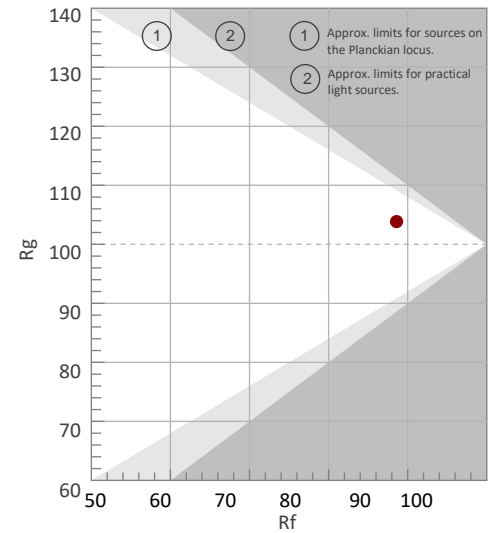
Rf 88.6

Fidelity index Rf

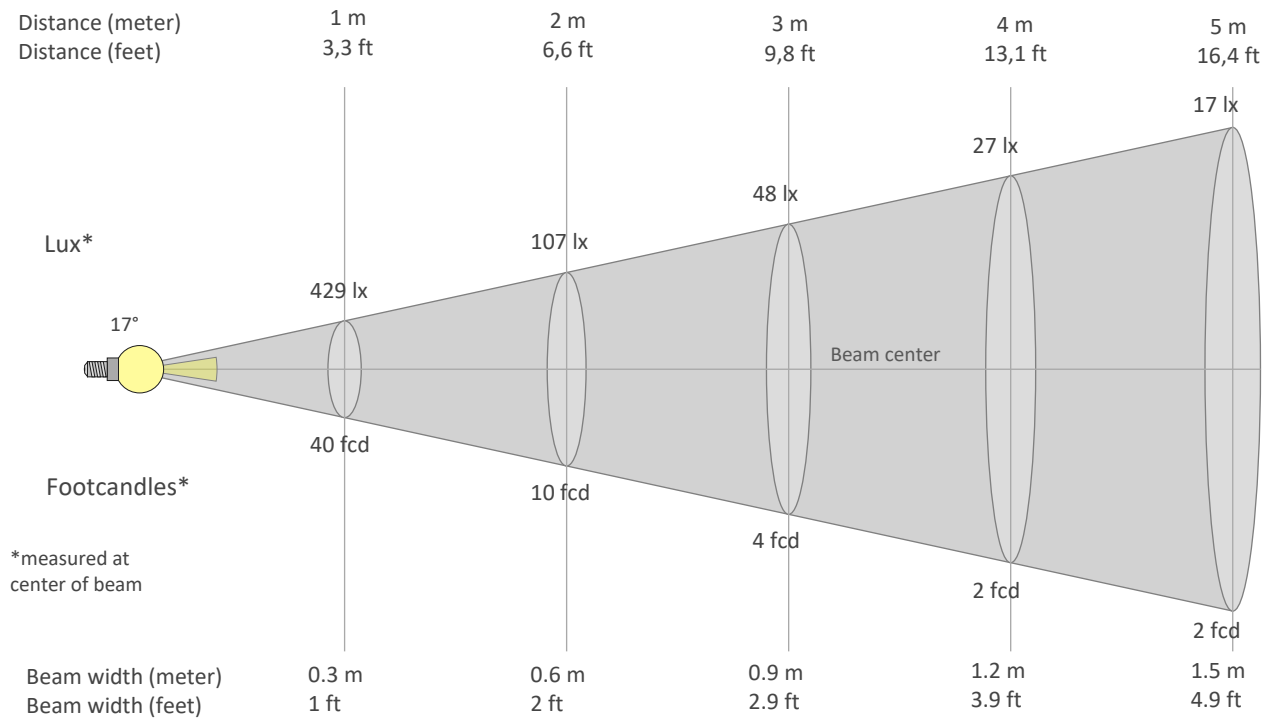
Rg 103.8

Gammut index Rg

Hue Bin	Graphic shifts (%)		
	R _f	Chroma	Hue
1	91	-3%	-4%
2	93	-3%	2%
3	87	0%	7%
4	85	6%	8%
5	87	9%	6%
6	87	9%	0%
7	81	7%	-10%
8	88	3%	-8%
9	86	-2%	-8%
10	90	-6%	-3%
11	89	-5%	4%
12	89	2%	5%
13	92	6%	0%
14	92	5%	-3%
15	87	4%	-7%
16	91	0%	-6%



BEAM DETAILS



Beam intensities from 1-20m

1m	2m	3m	4m	5m	6m	7m	8m	9m	10m	11m	12m	13m	14m	15m	16m	17m	18m	19m	20m
3.3ft	6.6ft	9.8ft	13.1ft	16.4ft	19.7ft	23ft	26.2ft	29.5ft	32.8ft	36.1ft	39.4ft	42.7ft	45.9ft	49.2ft	52.5ft	55.8ft	59.1ft	62.3ft	65.6ft
429lx	107lx	48lx	27lx	17lx	12lx	9lx	7lx	5lx	4lx	4lx	3lx	3lx	2lx	2lx	2lx	1lx	1lx	1lx	1lx
39.8fcd	10fcd	4.4fcd	2.5fcd	1.6fcd	1.1fcd	0.8fcd	0.6fcd	0.5fcd	0.4fcd	0.3fcd	0.3fcd	0.2fcd	0.2fcd	0.2fcd	0.2fcd	0.1fcd	0.1fcd	0.1fcd	0.1fcd

Intensities in 0° c-plane

0°	2°	4°	6°	8°	10°	12°	14°	16°	18°	20°	22°	24°	26°	28°	30°	32°	34°	36°	38°
429	408	357	294	229	180	146	120	98	79	62	47	36	27	21	16	12	10	8	6
100%	95%	83%	69%	53%	42%	34%	28%	23%	18%	14%	11%	8%	6%	5%	4%	3%	2%	2%	1%

Intensities in 90° c-plane

0°	2°	4°	6°	8°	10°	12°	14°	16°	18°	20°	22°	24°	26°	28°	30°	32°	34°	36°	38°
429	408	357	294	229	180	146	120	98	79	62	47	36	27	21	16	12	10	8	6
100%	95%	83%	69%	53%	42%	34%	28%	23%	18%	14%	11%	8%	6%	5%	4%	3%	2%	2%	1%

Intensities in 180° c-plane

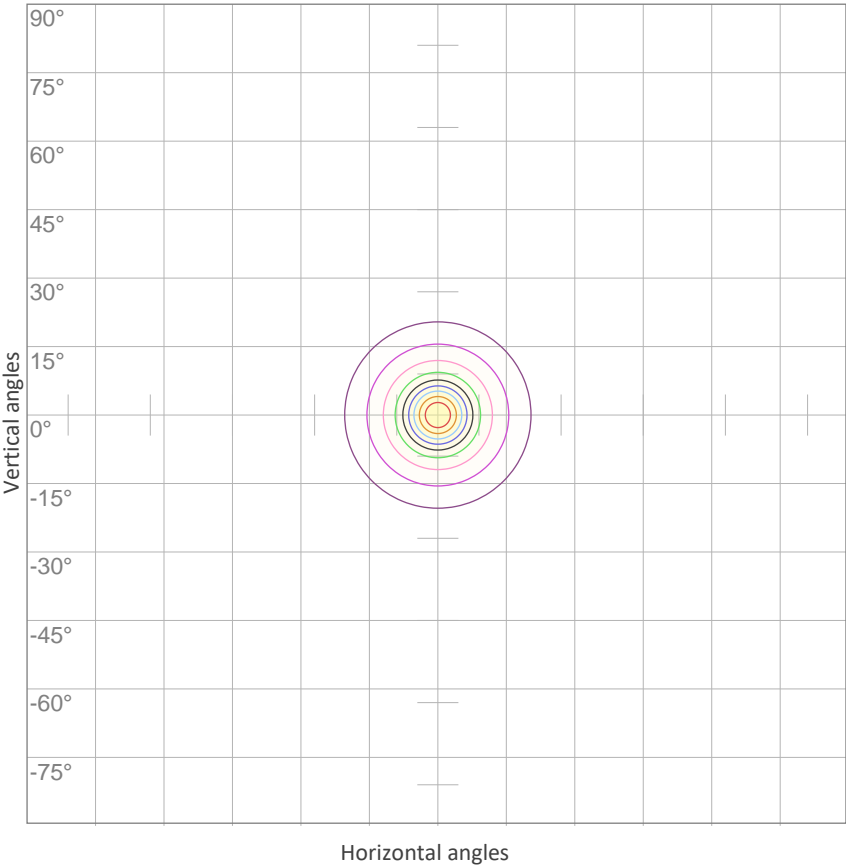
0°	2°	4°	6°	8°	10°	12°	14°	16°	18°	20°	22°	24°	26°	28°	30°	32°	34°	36°	38°
429	408	357	294	229	180	146	120	98	79	62	47	36	27	21	16	12	10	8	6
100%	95%	83%	69%	53%	42%	34%	28%	23%	18%	14%	11%	8%	6%	5%	4%	3%	2%	2%	1%

Intensities in 270° c-plane

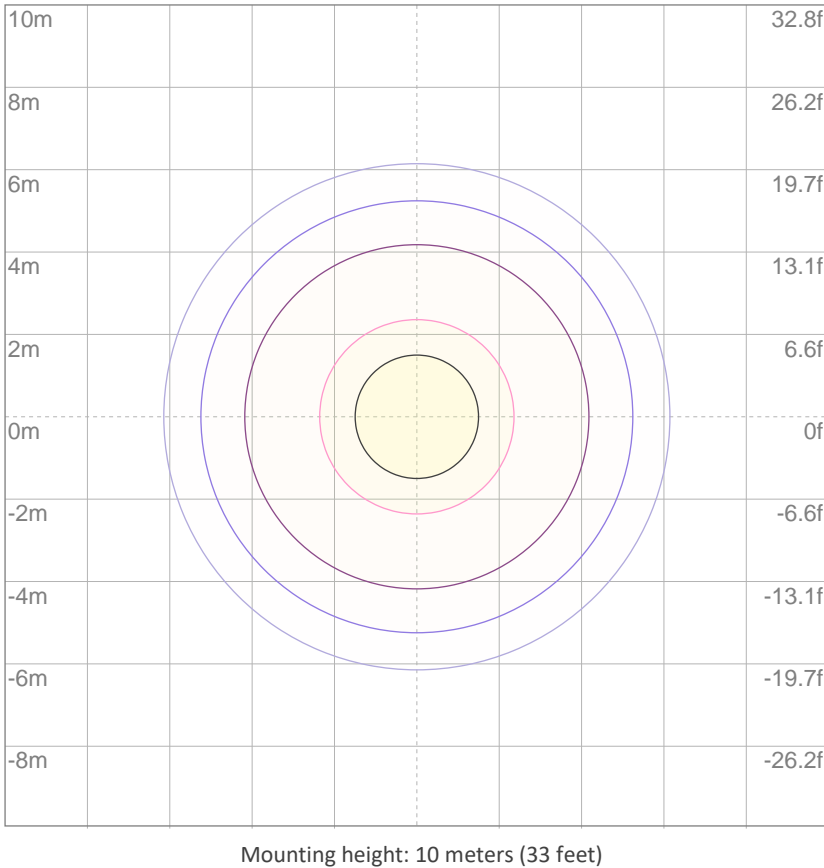
0°	2°	4°	6°	8°	10°	12°	14°	16°	18°	20°	22°	24°	26°	28°	30°	32°	34°	36°	38°
429	408	357	294	229	180	146	120	98	79	62	47	36	27	21	16	12	10	8	6
100%	95%	83%	69%	53%	42%	34%	28%	23%	18%	14%	11%	8%	6%	5%	4%	3%	2%	2%	1%

Beam angle 50%	Field angle 10%	Cutoff angle 2,5%	Intensity ratio in 120° cone	Intensity ratio in 90° cone
17°	45.4°	66.1°	98.5%	96.2%

ISO CANDELA DIAGRAM



ISO LUX DIAGRAM



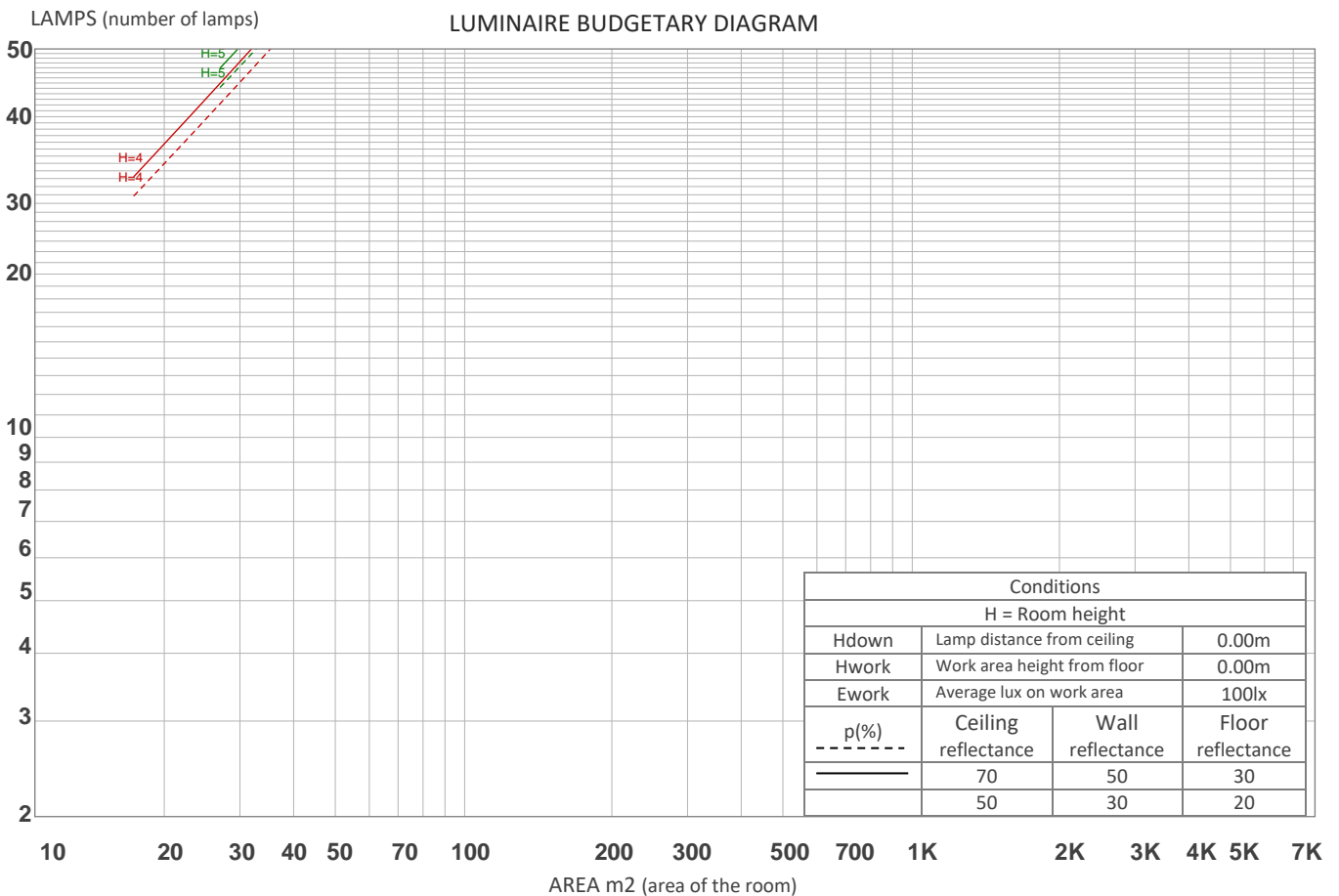
UGR

GLARE EVALUATION ACCORDING TO UGR

p Ceiling		70	70	50	50	30	70	70	50	50	30
p Walls		50	30	50	30	30	50	30	50	30	30
p Floor		20	20	20	20	20	20	20	20	20	20
Room size X Y		Viewing direction at right angles to lamp axis					Viewing direction parallel to lamp axis				
2H	2H	15.0	15.5	15.1	15.7	15.9	15.0	15.5	15.1	15.7	15.9
	3H	14.9	15.5	15.3	15.7	15.9	14.9	15.5	15.3	15.7	15.9
	4H	14.9	15.5	15.3	15.7	16.0	14.9	15.5	15.3	15.7	16.0
	6H	14.9	15.4	15.2	15.7	16.1	14.9	15.4	15.2	15.7	16.1
	8H	14.9	15.3	15.2	15.7	16.1	14.9	15.3	15.2	15.7	16.1
	12H	14.8	15.3	15.2	15.6	16.1	14.8	15.3	15.2	15.6	16.1
4H	2H	14.8	15.4	15.2	15.6	15.9	14.8	15.4	15.2	15.6	15.9
	3H	14.9	15.4	15.3	15.8	16.2	14.9	15.4	15.3	15.8	16.2
	4H	14.9	15.3	15.3	15.7	16.2	14.9	15.3	15.3	15.7	16.2
	6H	14.8	15.3	15.3	15.6	16.0	14.8	15.3	15.3	15.6	16.0
	8H	14.8	15.2	15.3	15.6	15.9	14.8	15.2	15.3	15.6	15.9
	12H	14.7	15.0	15.2	15.5	15.9	14.7	15.0	15.2	15.5	15.9
8H	4H	14.8	15.2	15.3	15.5	15.9	14.8	15.2	15.3	15.5	15.9
	6H	14.7	15.0	15.2	15.5	16.0	14.7	15.0	15.2	15.5	16.0
	8H	14.7	15.0	15.3	15.5	16.1	14.7	15.0	15.3	15.5	16.1
	12H	14.7	14.9	15.3	15.4	16.0	14.7	14.9	15.3	15.4	16.0
12H	4H	14.7	15.0	15.2	15.4	15.9	14.7	15.0	15.2	15.4	15.9
	6H	14.7	14.9	15.2	15.5	16.1	14.7	14.9	15.2	15.5	16.1
	8H	14.7	14.9	15.3	15.4	16.0	14.7	14.9	15.3	15.4	16.0
Variation of the observer position for the luminaire distance S											
S = 1.0H		3.8 / -3.7					3.8 / -3.7				
S = 1.5H		6.2 / -4.8					6.2 / -4.8				
S = 2.0H		8.1 / -6.4					8.1 / -6.4				
Standard table		n/a					n/a				
Correction summand		n/a					n/a				
Corrected glare indices referring to 81.1 lm total luminous flux											

COEFFICIENTS OF UTILIZATION

Ceiling reflectance	80				70				50			30			10			0
Wall reflectance	70	50	30	10	70	50	30	10	50	30	10	50	30	10	50	30	10	0
Floor reflectance	20	20	20	20	20	20	20	20	20	20	20	20	20	20	20	20	20	0
RCR	(RCR: Room Cavity Ratio) Room Values are expressed as percentage of Lumens delivered to the task surface																	
0	119	119	119	119	116	116	116	116	111	111	111	106	106	106	102	102	102	100
1	114	112	110	108	112	110	108	106	106	104	103	102	101	100	99	98	97	95
2	110	106	103	100	108	104	101	99	101	99	97	98	96	95	95	94	93	91
3	106	101	97	94	104	99	96	93	97	94	91	95	92	90	92	90	89	87
4	102	96	92	89	101	95	91	88	93	90	87	91	88	86	89	87	85	84
5	99	92	88	84	97	91	87	84	90	86	83	88	85	82	86	84	82	80
6	95	88	84	80	94	88	83	80	86	82	80	85	82	79	84	81	79	77
7	92	85	81	77	91	85	80	77	83	79	77	82	79	76	81	78	76	75
8	89	82	78	74	88	82	77	74	81	77	74	80	76	74	79	76	73	72
9	87	79	75	72	86	79	75	72	78	74	71	77	74	71	76	73	71	70
10	84	77	72	69	83	76	72	69	76	72	69	75	71	69	74	71	69	68



ZONAL LUMEN SUMMARY

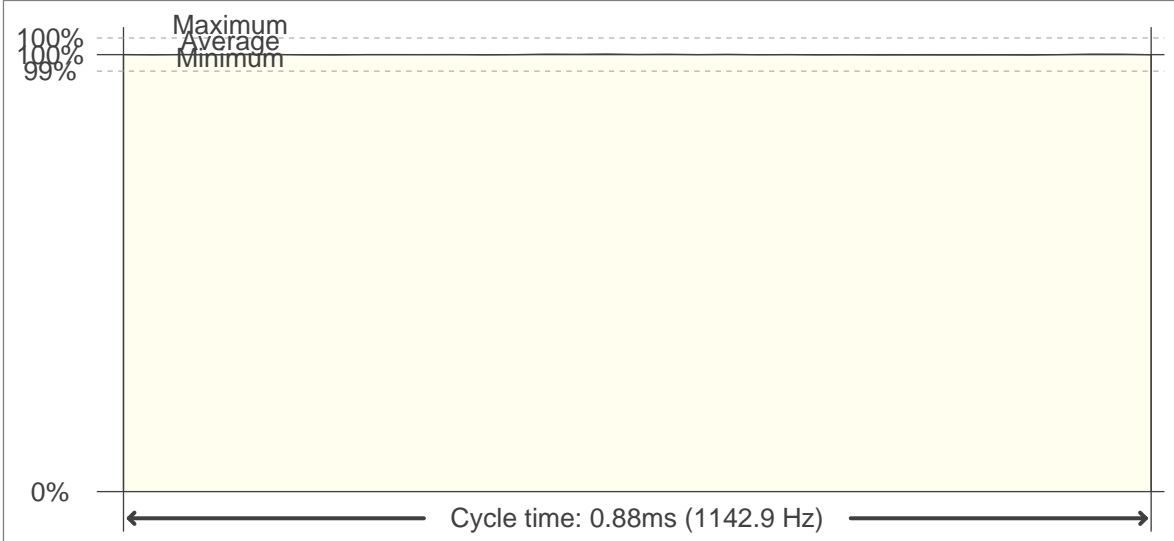
0°-10°	10°-20°	20°-30°	30°-40°	40°-50°	50°-60°	60°-70°	70°-80°	80°-90°
26.0 lm	30.1 lm	14.9 lm	5.57 lm	2.26 lm	1.02 lm	0.589 lm	0.222 lm	0.051 lm
90°-100°	100°-110°	110°-120°	120°-130°	130°-140°	140°-150°	150°-160°	160°-170°	170°-180°
0.032 lm	0.034 lm	0.031 lm	0.032 lm	0.052 lm	0.064 lm	0.058 lm	0.042 lm	0.011 lm

FLICKER

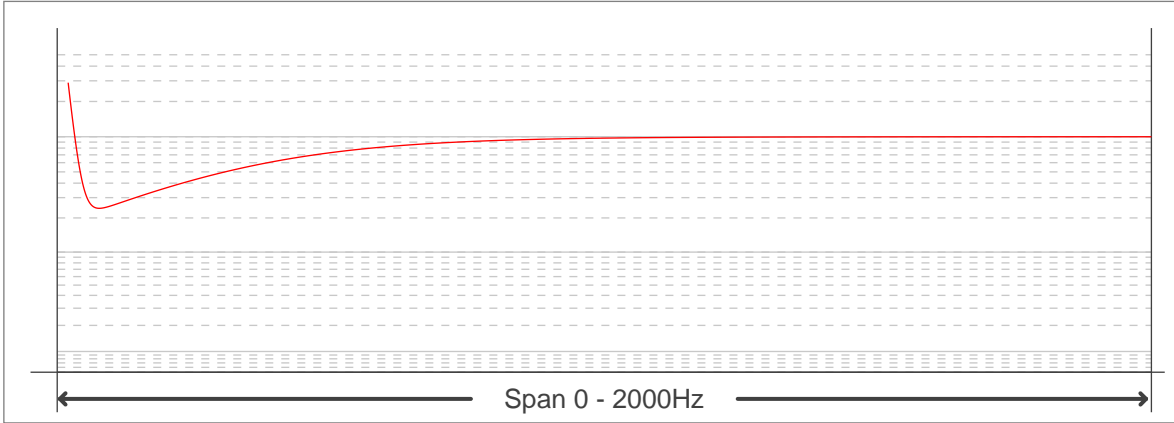
FLICKER CURVE (COMPLETE SAMPLED FLICKER)



FLICKER FRAME (FRAME OF ONE FLICKER PERIOD)



FLICKER FFT (FREQUENCY SCOPE OF FLICKER CURVE)



FLICKER RESULTS:

Flicker frequency:	1142.86 Hz
Flicker index:	0
Flicker percentage:	0.2 %
SVM: (Visual flicker)	0

FLICKER CONDITIONS:

Sample rate:	40000 samples/second
--------------	----------------------