

# PHOTOMETRIC TEST REPORT

---

FUSE LED USB MATT GOLD (UL)

astro

## LIGHT EFFICIENCY:

42 Lumen/Watt

## LIGHT QUALITY:

CRI: 92.3

## COLOR TEMPERATURE:

2770 K

OUTPUT: 141 lm

PEAK: 700 cd

POWER: 3.3 W

PF: 0.6

Tracking number: [n/a](#)

Product name:

Fuse LED USB Matt Gold (UL)

Item number:

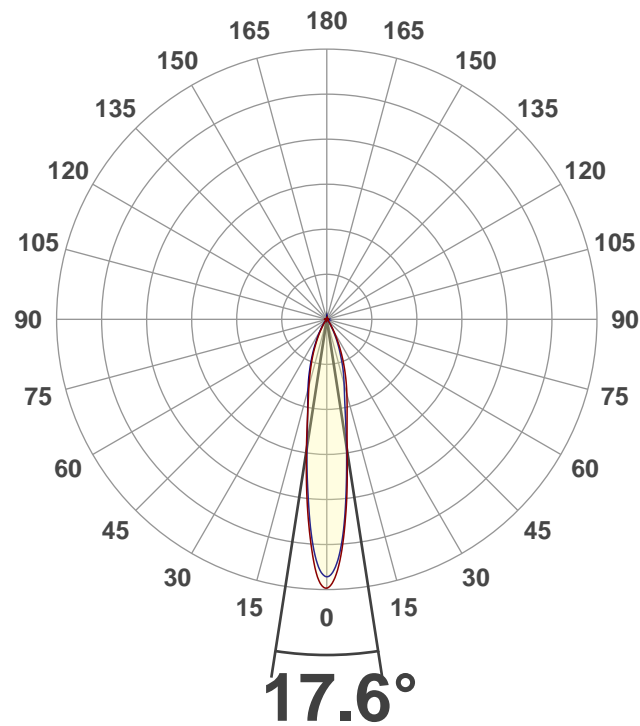
1215101

Date and time:

14/02/2020 14:58:04

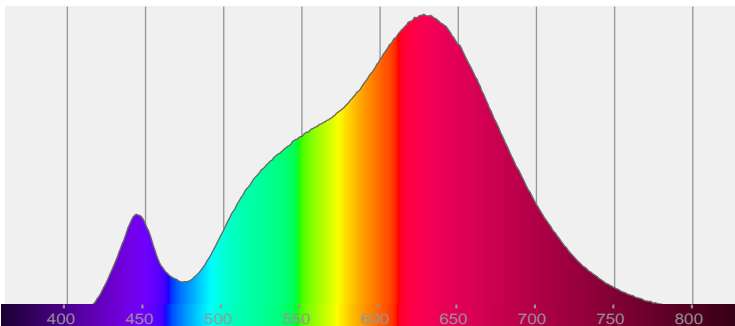
Description:

LED Reading Light with USB

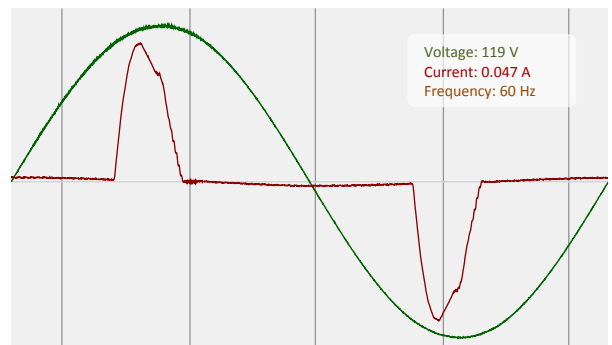


CIE 1931  
x: 0.455  
y: 0.411

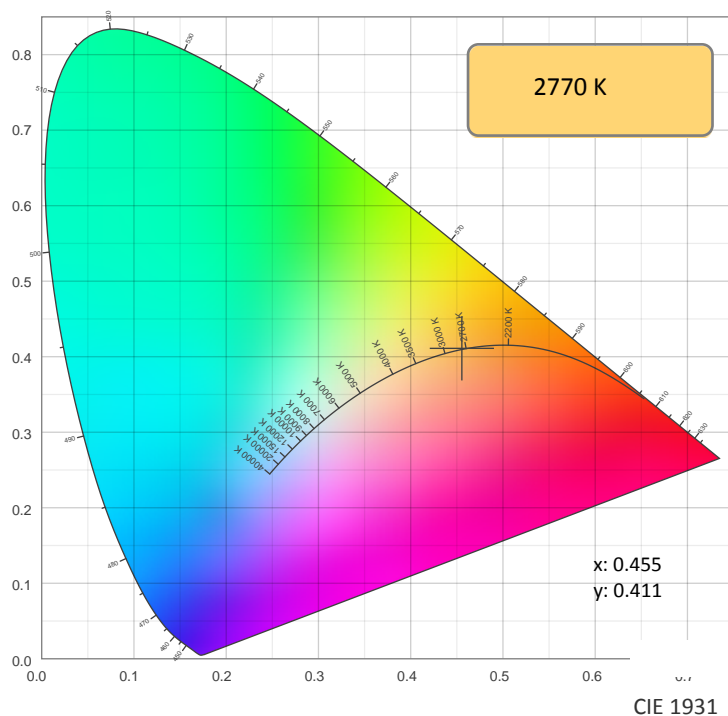
## SPECTRA



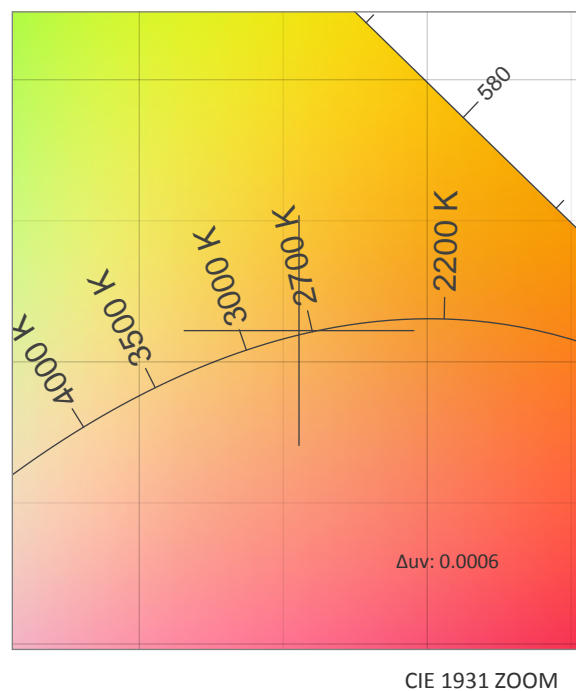
## POWER



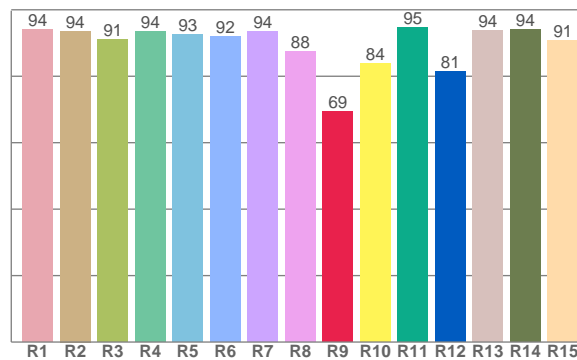
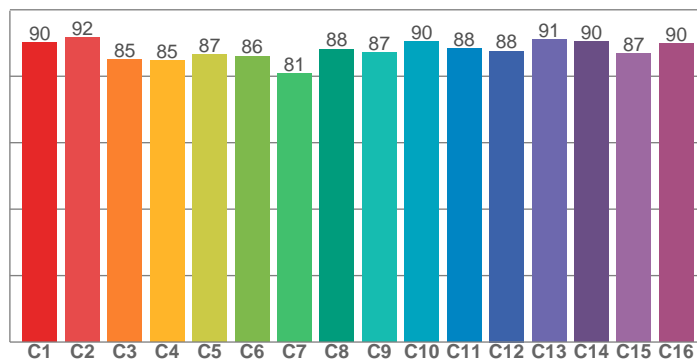
## COLOR DETAILS



TM30: 88.1



CRI: 92.3 (R1-R8)



CRI R values, only R1-R8 are used to calculate final CRI value

R1	R2	R3	R4	R5	R6	R7	R8	R9	R10	R11	R12	R13	R14	R15
94.1	93.6	91.2	93.5	92.7	91.9	93.6	87.6	69.4	83.8	94.6	81.3	93.7	94.0	90.8

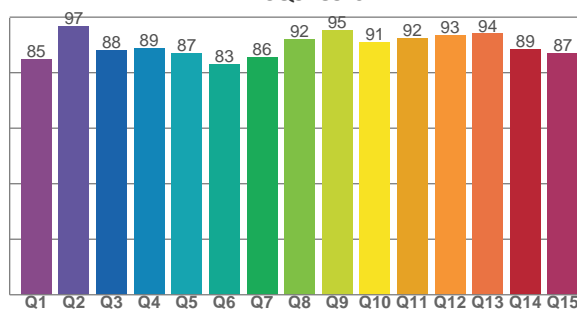
TM30 C values, 16 binned values out of total of 99 C values

C1	C2	C3	C4	C5	C6	C7	C8	C9	C10	C11	C12	C13	C14	C15	C16
90.1	91.7	85.1	84.8	86.5	86.1	80.9	88.2	87.1	90.5	88.2	87.6	91.1	90.3	86.8	89.8

CQS Q values

Q1	Q2	Q3	Q4	Q5	Q6	Q7	Q8	Q9	Q10	Q11	Q12	Q13	Q14	Q15
84.9	96.8	88.1	88.9	87.0	83.2	85.6	92.1	95.4	90.9	92.5	93.4	94.0	88.6	87.0

CQS: 89.0



## COLOR PARAMETERS

Color temperature	Color rendering index	Red component	Color fidelity	Color gamut	Color quality scale	Color coordinate cie 1931	Color coordinate cie 1931	Color coordinate	Color coordinate	Color deviation from black body
CCT	CRI	CRI R9	TM30 Rf	TM30 Rg	CQS	x	y	u	v	$\Delta uv$
2770 K	92.3	69.4	88.1	103.5	89.0	0.455	0.411	0.259	0.351	0.0006

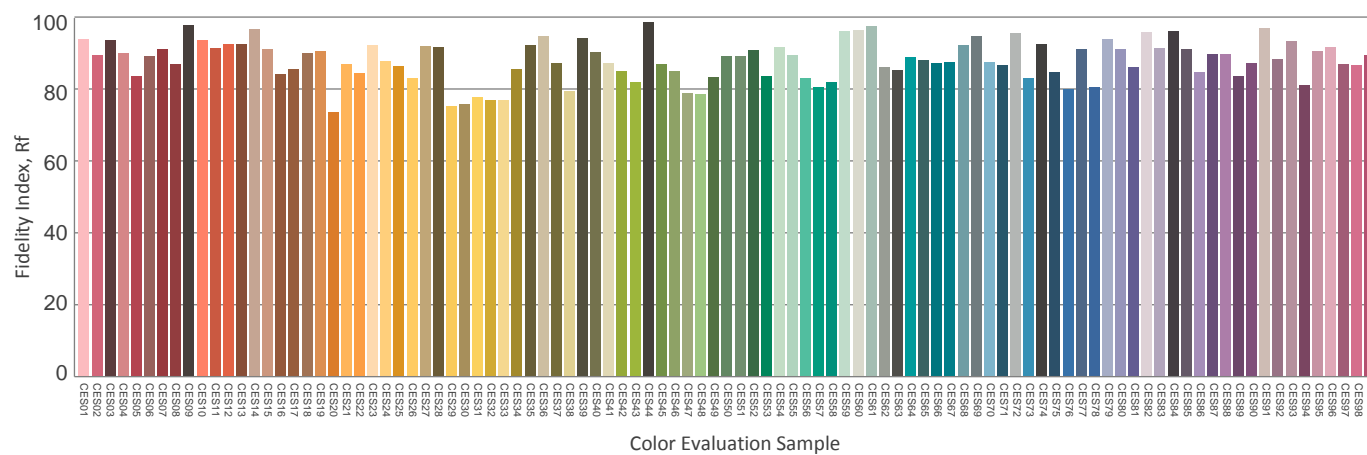
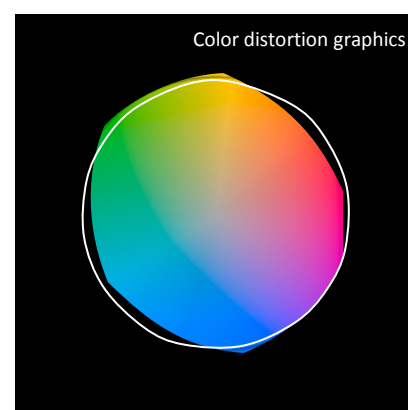
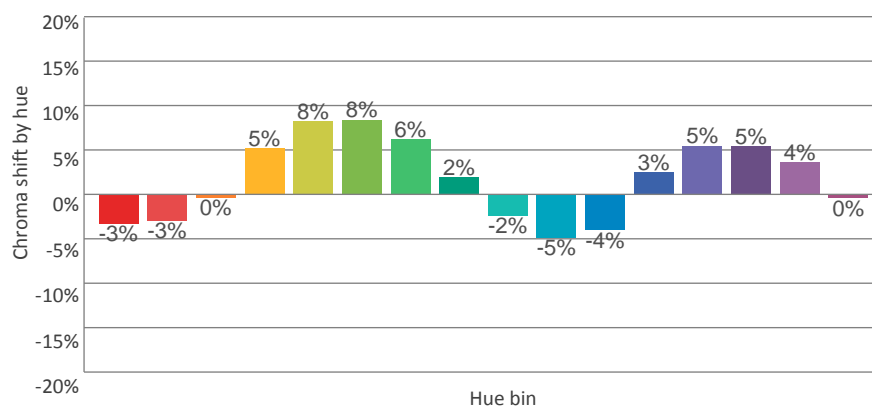
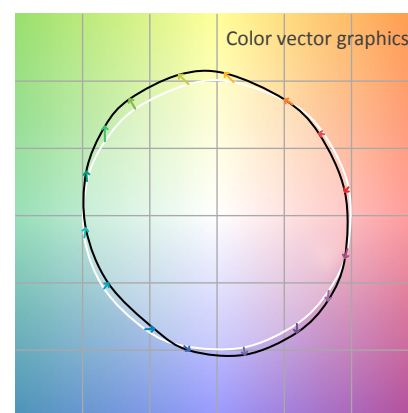
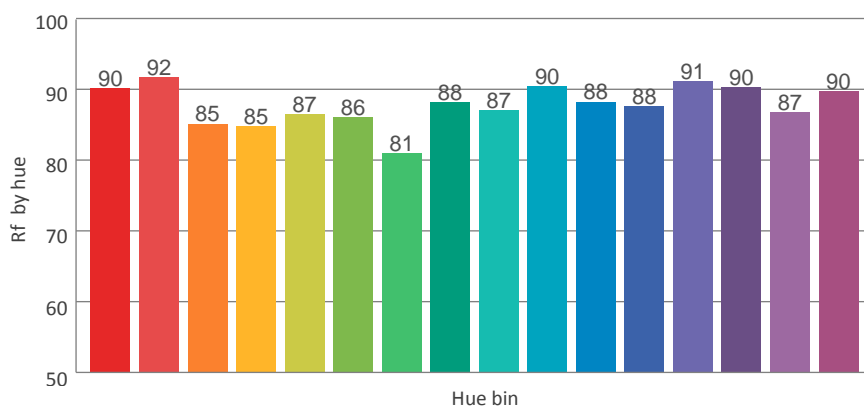
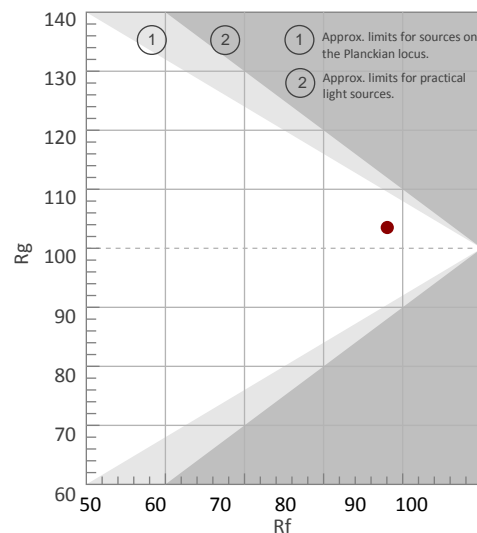
Rf 88.1

Fidelity index Rf

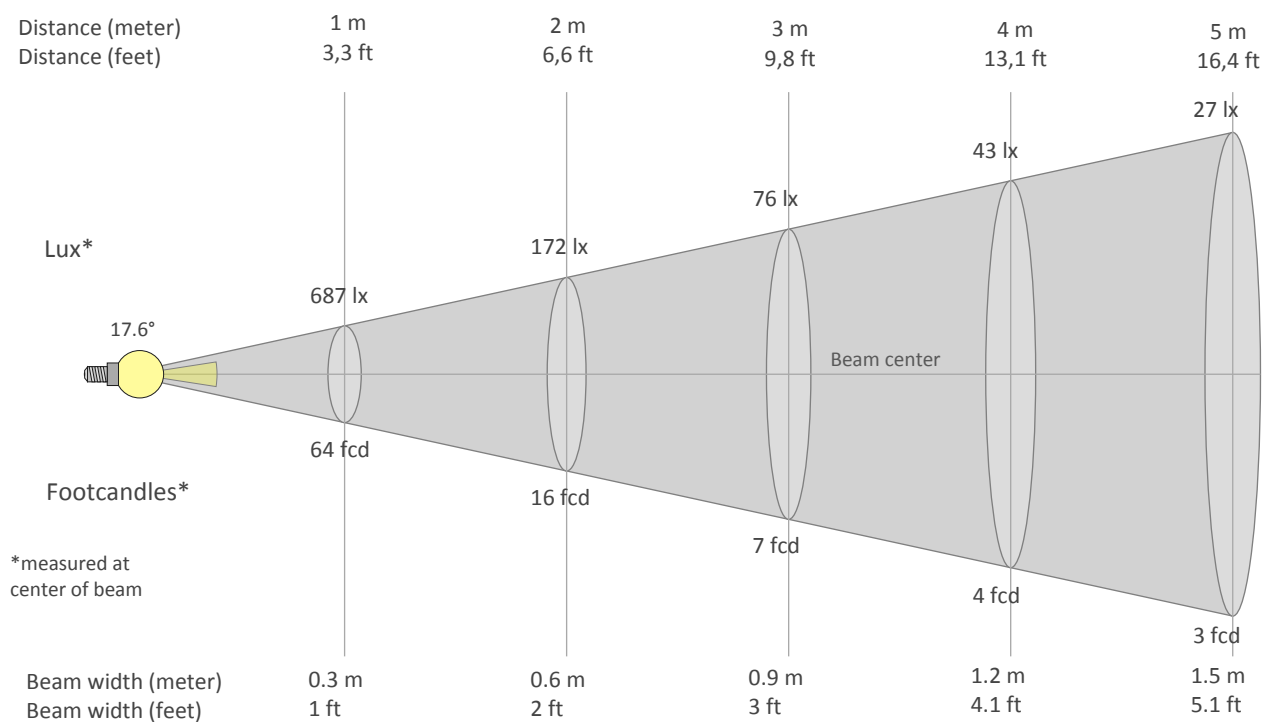
Rg 103.5

Gammut index Rg

Hue Bin	Graphic shifts (%)		
	R <sub>f</sub>	Chroma	Hue
1	90	-3%	-3%
2	92	-3%	3%
3	85	0%	7%
4	85	5%	8%
5	87	8%	6%
6	86	8%	0%
7	81	6%	-9%
8	88	2%	-7%
9	87	-2%	-7%
10	90	-5%	-1%
11	88	-4%	5%
12	88	3%	4%
13	91	5%	0%
14	90	5%	-4%
15	87	4%	-6%
16	90	0%	-7%



## BEAM DETAILS



Beam intensities from 1-20m

1m	2m	3m	4m	5m	6m	7m	8m	9m	10m	11m	12m	13m	14m	15m	16m	17m	18m	19m	20m
3.3ft	6.6ft	9.8ft	13.1ft	16.4ft	19.7ft	23ft	26.2ft	29.5ft	32.8ft	36.1ft	39.4ft	42.7ft	45.9ft	49.2ft	52.5ft	55.8ft	59.1ft	62.3ft	65.6ft
687lx	172lx	76lx	43lx	27lx	19lx	14lx	11lx	8lx	7lx	6lx	5lx	4lx	4lx	3lx	3lx	2lx	2lx	2lx	2lx
63.8fcd	16fcd	7.1fcd	4fcd	2.6fcd	1.8fcd	1.3fcd	1fcd	0.8fcd	0.6fcd	0.5fcd	0.4fcd	0.4fcd	0.3fcd	0.3fcd	0.2fcd	0.2fcd	0.2fcd	0.2fcd	0.2fcd

Intensities in 0° c-plane

0°	2°	4°	6°	8°	10°	12°	14°	16°	18°	20°	22°	24°	26°	28°	30°	32°	34°	36°	38°
687	667	589	488	383	304	255	218	187	160	133	109	87	68	51	38	29	22	17	13
100%	97%	86%	71%	56%	44%	37%	32%	27%	23%	19%	16%	13%	10%	7%	6%	4%	3%	2%	2%

Intensities in 90° c-plane

0°	2°	4°	6°	8°	10°	12°	14°	16°	18°	20°	22°	24°	26°	28°	30°	32°	34°	36°	38°
687	644	575	473	372	288	227	189	161	137	112	90	72	56	41	31	22	16	12	9
100%	94%	84%	69%	54%	42%	33%	28%	23%	20%	16%	13%	10%	8%	6%	4%	3%	2%	2%	1%

Intensities in 180° c-plane

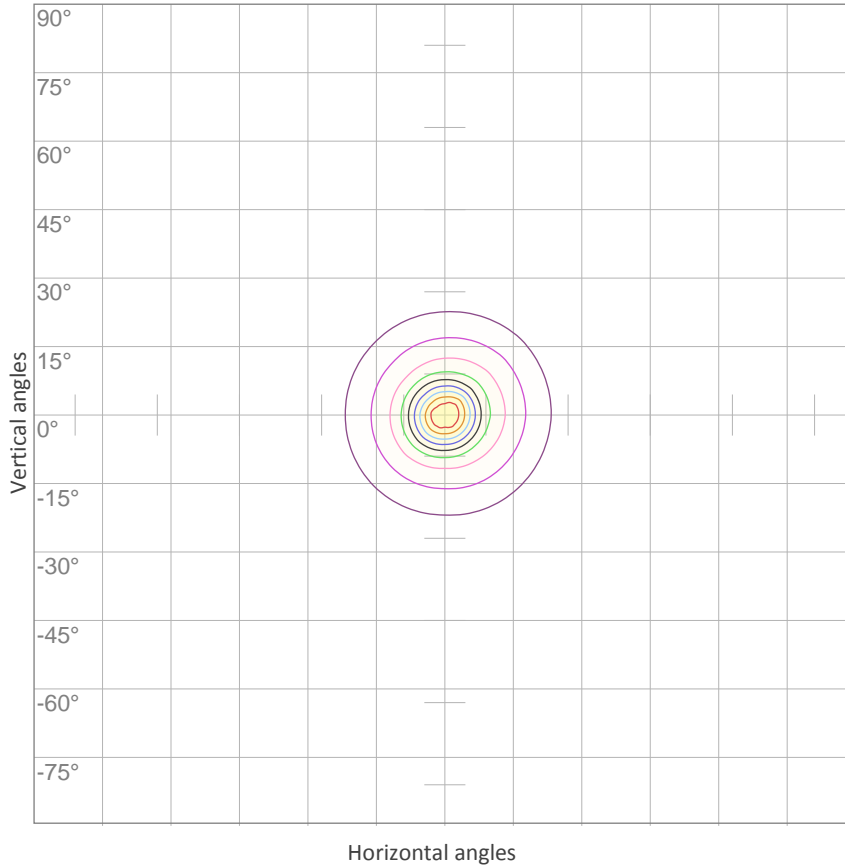
0°	2°	4°	6°	8°	10°	12°	14°	16°	18°	20°	22°	24°	26°	28°	30°	32°	34°	36°	38°
687	672	587	485	384	298	236	196	164	137	113	92	71	54	41	29	20	15	10	8
100%	98%	85%	71%	56%	43%	34%	29%	24%	20%	16%	13%	10%	8%	6%	4%	3%	2%	2%	1%

Intensities in 270° c-plane

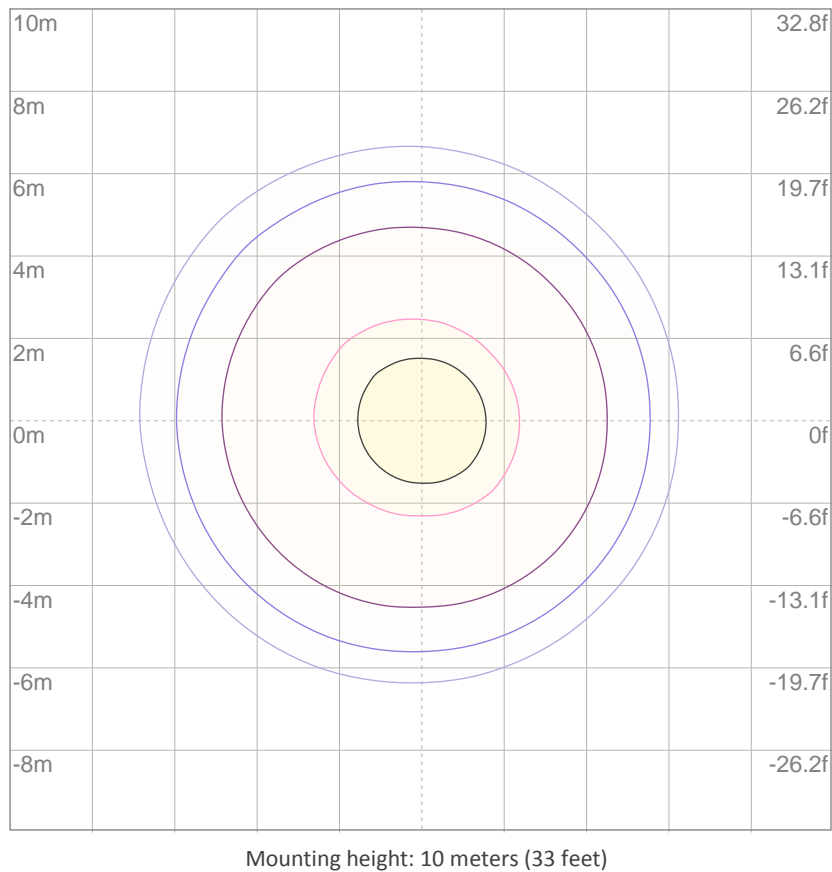
0°	2°	4°	6°	8°	10°	12°	14°	16°	18°	20°	22°	24°	26°	28°	30°	32°	34°	36°	38°
687	642	566	464	371	291	239	204	175	148	123	100	80	62	47	35	26	20	15	11
100%	93%	82%	68%	54%	42%	35%	30%	25%	21%	18%	15%	12%	9%	7%	5%	4%	3%	2%	2%

Beam angle 50%	Field angle 10%	Cutoff angle 2,5%	Intensity ratio in 120° cone	Intensity ratio in 90° cone
17.6°	50°	68.6°	99.1%	98.4%

ISO CANDELA DIAGRAM



ISO LUX DIAGRAM



## UGR

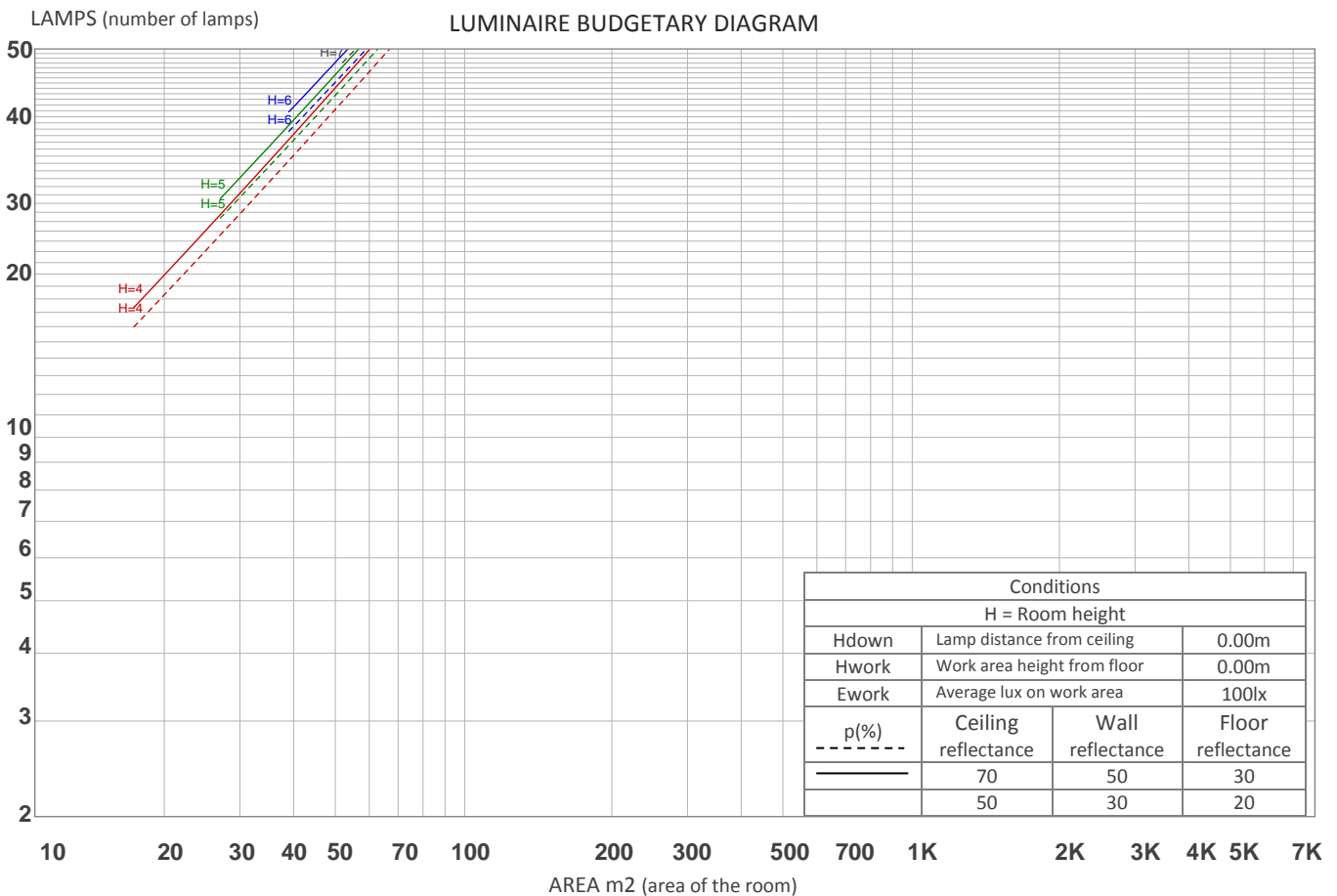
## GLARE EVALUATION ACCORDING TO UGR

p Ceiling		70	70	50	50	30	70	70	50	50	30
p Walls		50	30	50	30	30	50	30	50	30	30
p Floor		20	20	20	20	20	20	20	20	20	20
Room size X    Y		Viewing direction at right angles to lamp axis					Viewing direction parallel to lamp axis				
2H	2H	13.4	14.0	13.7	14.2	14.5	11.6	12.2	11.8	12.4	12.6
	3H	13.3	13.9	13.6	14.1	14.3	11.4	12.0	11.7	12.3	12.5
	4H	13.2	13.8	13.5	14.0	14.3	11.4	11.9	11.7	12.2	12.4
	6H	13.1	13.6	13.5	13.9	14.2	11.3	11.8	11.6	12.1	12.4
	8H	13.1	13.6	13.4	13.9	14.2	11.3	11.8	11.6	12.1	12.4
	12H	13.1	13.5	13.4	13.8	14.2	11.3	11.7	11.6	12.0	12.4
4H	2H	13.2	13.7	13.5	14.0	14.3	11.4	11.9	11.7	12.2	12.4
	3H	13.1	13.5	13.4	13.8	14.2	11.2	11.7	11.6	12.0	12.3
	4H	13.0	13.4	13.4	13.7	14.1	11.2	11.6	11.5	11.9	12.3
	6H	12.9	13.3	13.3	13.6	14.0	11.1	11.5	11.5	11.8	12.2
	8H	12.9	13.2	13.3	13.6	14.0	11.1	11.4	11.5	11.8	12.2
	12H	12.9	13.1	13.3	13.5	14.0	11.1	11.4	11.6	11.8	12.2
8H	4H	12.9	13.2	13.3	13.6	14.0	11.1	11.3	11.5	11.7	12.1
	6H	12.8	13.0	13.3	13.5	13.9	11.0	11.3	11.5	11.7	12.1
	8H	12.8	13.0	13.3	13.4	13.9	11.0	11.2	11.5	11.7	12.1
	12H	12.8	12.9	13.3	13.4	13.9	11.0	11.2	11.5	11.6	12.1
12H	4H	12.8	13.1	13.3	13.5	13.9	11.0	11.3	11.5	11.7	12.1
	6H	12.8	13.0	13.3	13.4	13.9	11.0	11.2	11.5	11.6	12.1
	8H	12.8	12.9	13.2	13.4	13.9	11.0	11.1	11.5	11.6	12.1
Variation of the observer position for the luminaire distance S											
S = 1.0H	+5.1 / -10.7					+5.3 / -8.6					
S = 1.5H	+7.9 / -12.2					+8.1 / -9.9					
S = 2.0H	+9.9 / -12.8					+10.1 / -10.5					
Standard table	BK00					BK00					
Correction summand	-5.2					-7.0					
Corrected glare indices referring to 141 lm total luminous flux											

UGR data could be incorrect as lamp output is not symmetrical. Goto Edit->Photometric->Corrections and select Correct asymmetry.

## COEFFICIENTS OF UTILIZATION

Ceiling reflectance	80				70				50			30			10			0
Wall reflectance	70	50	30	10	70	50	30	10	50	30	10	50	30	10	50	30	10	0
Floor reflectance	20	20	20	20	20	20	20	20	20	20	20	20	20	20	20	20	20	0
RCR	(RCR: Room Cavity Ratio) Room Values are expressed as percentage of Lumens delivered to the task surface																	
0	119	119	119	119	116	116	116	116	111	111	111	106	106	106	101	101	101	99
1	114	112	110	108	112	110	108	107	106	104	103	102	101	100	99	98	97	95
2	110	106	103	100	108	105	102	99	101	99	97	98	97	95	96	94	93	91
3	106	101	97	94	104	100	96	93	97	94	92	95	92	90	93	91	89	88
4	103	97	92	89	101	96	92	88	93	90	87	91	89	86	90	87	85	84
5	99	93	88	85	98	92	87	84	90	86	84	88	85	83	87	84	82	81
6	96	89	84	81	94	88	84	81	87	83	80	85	82	79	84	81	79	78
7	92	85	81	78	91	85	80	77	84	80	77	82	79	77	81	78	76	75
8	90	82	78	75	88	82	77	74	81	77	74	80	76	74	79	76	73	72
9	87	79	75	72	86	79	75	72	78	74	72	77	74	71	76	73	71	70
10	84	77	72	69	83	76	72	69	76	72	69	75	71	69	74	71	69	68



## ZONAL LUMEN SUMMARY

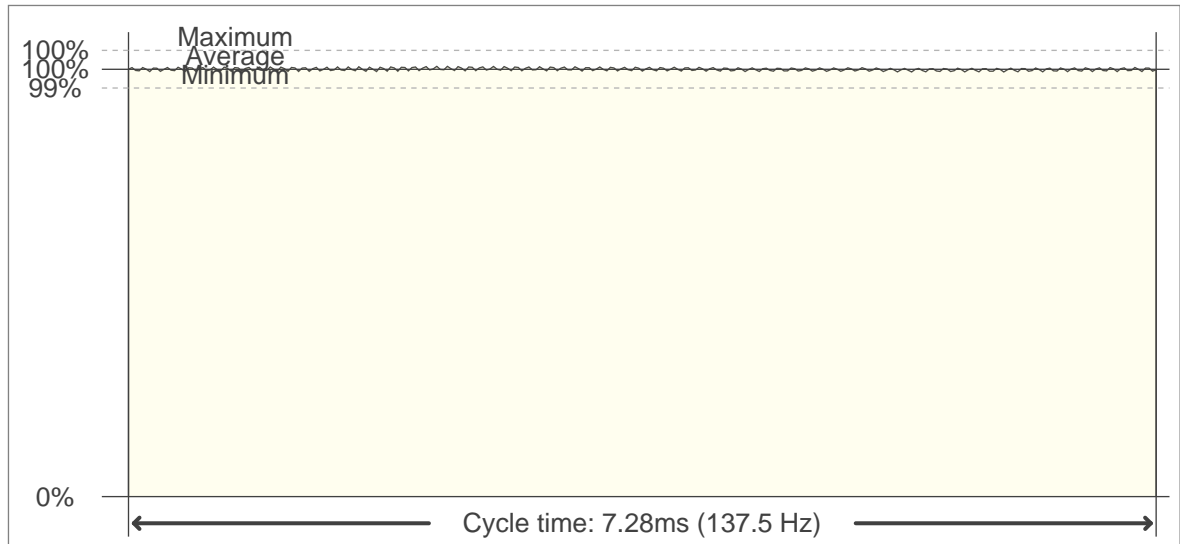
0°-10°	10°-20°	20°-30°	30°-40°	40°-50°	50°-60°	60°-70°	70°-80°	80°-90°
42.7 lm	52.2 lm	32.0 lm	10.3 lm	2.42 lm	0.399 lm	0.128 lm	0.079 lm	0.078 lm
90°-100°	100°-110°	110°-120°	120°-130°	130°-140°	140°-150°	150°-160°	160°-170°	170°-180°
0.086 lm	0.088 lm	0.093 lm	0.113 lm	0.136 lm	0.159 lm	0.152 lm	0.098 lm	0.027 lm

## FLICKER

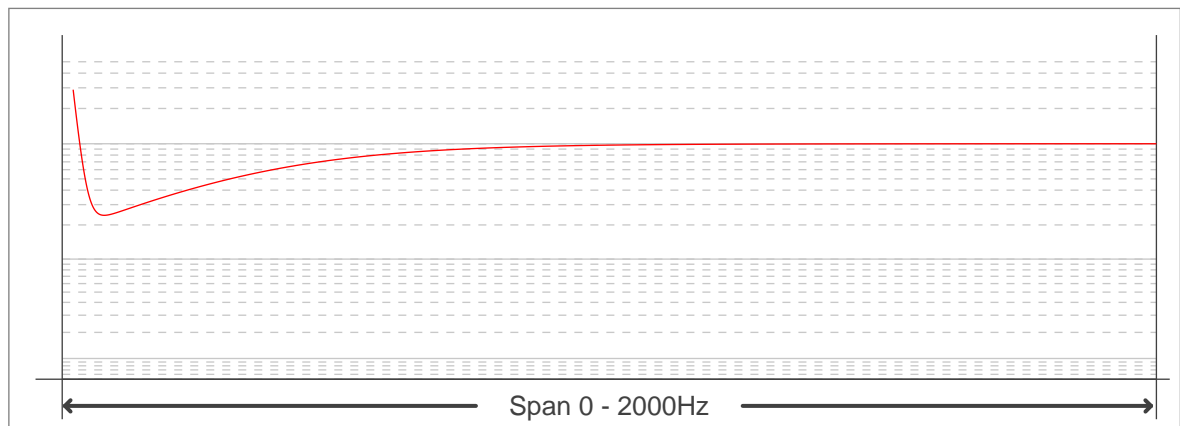
## FLICKER CURVE (COMPLETE SAMPLED FLICKER)



## FLICKER FRAME (FRAME OF ONE FLICKER PERIOD)



## FLICKER FFT (FREQUENCY SCOPE OF FLICKER CURVE)



## FLICKER RESULTS:

Flicker frequency:	137.46 Hz
Flicker index:	0
Flicker percentage:	1.59 %
SVM: (Visual flicker)	0.01

## FLICKER CONDITIONS:

Sample rate:	40000 samples/second
--------------	----------------------